

A19693

Leader in Biomolecular Solutions for Life Science



Bcl-2 Rabbit mAb

Catalog No.: A19693 **Recombinant** **81 Publications**

Basic Information

Observed MW

26kDa

Calculated MW

26kDa

Category

SMab Recombinant Monoclonal Antibody

Applications

WB,IHC-P,IP,ELISA

Cross-Reactivity

Human,Mouse,Rat

CloneNo number

ARC0173

Background

This gene encodes an integral outer mitochondrial membrane protein that blocks the apoptotic death of some cells such as lymphocytes. Constitutive expression of BCL2, such as in the case of translocation of BCL2 to Ig heavy chain locus, is thought to be the cause of follicular lymphoma. Alternative splicing results in multiple transcript variants.

Recommended Dilutions

| | |
|--------------|--|
| WB | 1:500 - 1:1000 |
| IHC-P | 1:50 - 1:200 |
| IP | 0.5µg-4µg antibody for 400µg-600µg extracts of whole cells |

Immunogen Information

| | |
|----------------|-------------------|
| Gene ID | Swiss Prot |
| 596 | P10415 |

Immunogen

Recombinant fusion protein containing a sequence corresponding to amino acids 1-211 of human Bcl-2 (P10415).

Synonyms

Bcl-2; PPP1R50

Contact



www.abclonal.com

Product Information

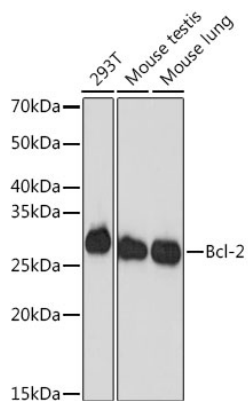
| | | |
|---------------|----------------|-----------------------|
| Source | Isotype | Purification |
| Rabbit | IgG | Affinity purification |

Storage

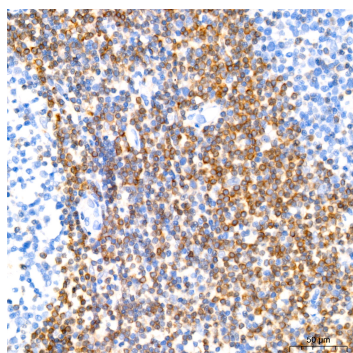
Store at -20°C. Avoid freeze / thaw cycles.

Buffer: PBS with 0.02% sodium azide,0.05% BSA,50% glycerol,pH7.3.

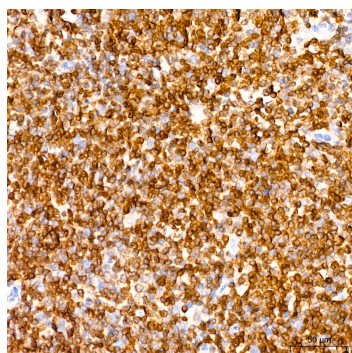
Validation Data



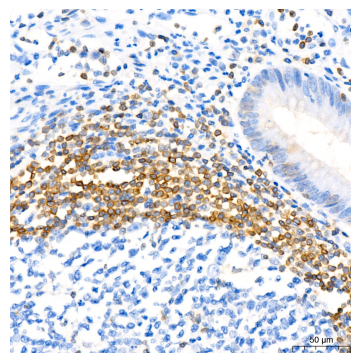
Western blot analysis of various lysates using Bcl-2 Rabbit mAb (A19693) at 1:1000 dilution.
 Secondary antibody: HRP Goat Anti-Rabbit IgG (H+L) (AS014) at 1:10000 dilution.
 Lysates/proteins: 25µg per lane.
 Blocking buffer: 3% nonfat dry milk in TBST.
 Detection: ECL Basic Kit (RM00020).
 Exposure time: 3min.



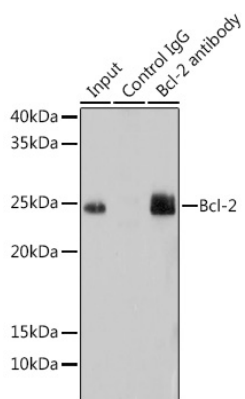
Immunohistochemistry analysis of paraffin-embedded human tonsil using Bcl-2 Rabbit mAb (A19693) at dilution of 1:100 (40x lens). Perform high pressure antigen retrieval with 10 mM citrate buffer pH 6.0 before commencing with IHC staining protocol.



Immunohistochemistry analysis of paraffin-embedded human follicular lymphoma using Bcl-2 Rabbit mAb (A19693) at dilution of 1:100 (40x lens). Perform high pressure antigen retrieval with 10 mM citrate buffer pH 6.0 before commencing with IHC staining protocol.



Immunohistochemistry analysis of paraffin-embedded human appendix using Bcl-2 Rabbit mAb (A19693) at dilution of 1:100 (40x lens). Perform high pressure antigen retrieval with 10 mM citrate buffer pH 6.0 before commencing with IHC staining protocol.



Immunoprecipitation analysis of 200 µg extracts of Mouse lung using 3 µg Bcl-2 antibody (A19693). Western blot was performed from the immunoprecipitate using Bcl-2 antibody (A19693) at a dilution of 1:1000.