

[KO Validated] ATG5 Rabbit mAb

Catalog No.: A19677 **KO** **Validated** **Recombinant** **2 Publications**

Basic Information

Catalog No.

A19677

Observed MW

55KDa

Calculated MW

22kDa/32kDa

Category

Primary antibody

Applications

WB, IHC, IP

Cross-Reactivity

Human, Mouse, Rat

Recommended Dilutions

WB	1:500 - 1:2000
IHC	1:50 - 1:200
IP	1:50 - 1:200

Contact

 | www.abclonal.com

Background

The protein encoded by this gene, in combination with autophagy protein 12, functions as an E1-like activating enzyme in a ubiquitin-like conjugating system. The encoded protein is involved in several cellular processes, including autophagic vesicle formation, mitochondrial quality control after oxidative damage, negative regulation of the innate antiviral immune response, lymphocyte development and proliferation, MHC II antigen presentation, adipocyte differentiation, and apoptosis. Several transcript variants encoding different protein isoforms have been found for this gene. [provided by RefSeq, Sep 2015]

Immunogen Information

Gene ID	Swiss Prot
9474	Q9H1Y0

Immunogen

A synthesized peptide derived from human ATG5.

Synonyms

ATG5;APG5;APG5-LIKE;APG5L;ASP;hAPG5

Product Information

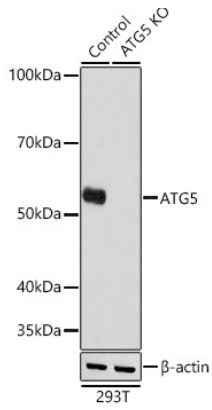
Source	Isotype	Purification
Rabbit	IgG	Affinity purification

Storage

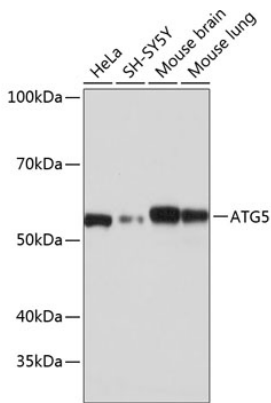
Store at -20°C. Avoid freeze / thaw cycles.

Buffer: PBS with 0.02% sodium azide,0.05% BSA,50% glycerol,pH7.3.

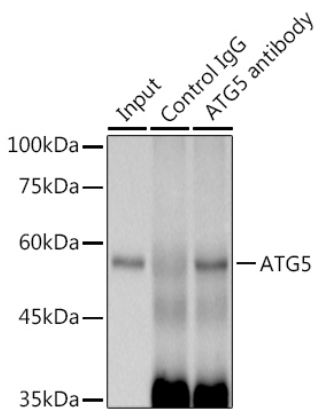
Validation Data



Western blot analysis of extracts from normal (control) and ATG5 knockout (KO) 293T cells, using ATG5 antibody (A19677) at 1:1000 dilution.
Secondary antibody: HRP Goat Anti-Rabbit IgG (H+L) (AS014) at 1:10000 dilution.
Lysates/proteins: 25ug per lane.
Blocking buffer: 3% nonfat dry milk in TBST.
Detection: ECL Basic Kit (RM00020).
Exposure time: 1s.

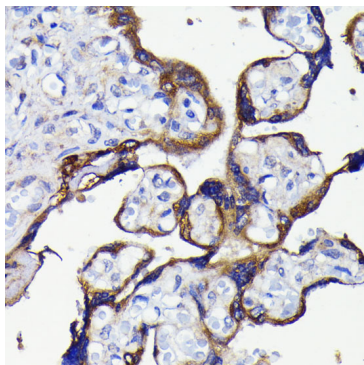


Western blot analysis of extracts of various cell lines, using ATG5 antibody (A19677) at 1:1000 dilution.
Secondary antibody: HRP Goat Anti-Rabbit IgG (H+L) (AS014) at 1:10000 dilution.
Lysates/proteins: 25ug per lane.
Blocking buffer: 3% nonfat dry milk in TBST.
Detection: ECL Basic Kit (RM00020).
Exposure time: 1s.



Immunoprecipitation analysis of 300ug extracts of 293T cells using 3ug ATG5 antibody (A19677).
Western blot was performed from the immunoprecipitate using ATG5 (A19677) at a dilution of 1:1000.

Validation Data



Immunohistochemistry of paraffin-embedded human placenta using ATG5 antibody (A19677) at dilution of 1:100 (40x lens).