

[KO Validated] TTC11/FIS1 Rabbit mAb

Catalog No.: A19666 **KO** **Validated** **Recombinant** **2 Publications**

Basic Information

Catalog No.

A19666

Observed MW

15KDa

Calculated MW

15kDa

Category

Primary antibody

Applications

WB, IHC, IF, IP

Cross-Reactivity

Human, Mouse, Rat

Background

The balance between fission and fusion regulates the morphology of mitochondria. TTC11 is a component of a mitochondrial complex that promotes mitochondrial fission (James et al., 2003 [PubMed 12783892]).[supplied by OMIM, Mar 2008]

Recommended Dilutions

WB	1:500 - 1:2000
IHC	1:50 - 1:200
IF	1:50 - 1:200
IP	1:50 - 1:200

Immunogen Information

Gene ID	Swiss Prot
51024	Q9Y3D6

Immunogen

A synthesized peptide derived from human TTC11/FIS1.

Synonyms

CGI-135;TTC11;FIS1;TTC11 / FIS1;fission

Contact

 | www.abclonal.com

Product Information

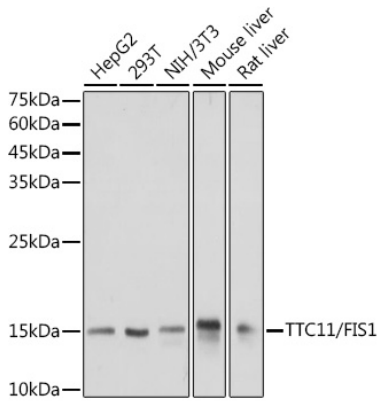
Source	Isotype	Purification
Rabbit	IgG	Affinity purification

Storage

Store at -20°C. Avoid freeze / thaw cycles.

Buffer: PBS with 0.02% sodium azide,0.05% BSA,50% glycerol,pH7.3.

Validation Data



Western blot analysis of extracts of various cell lines, using TTC11/FIS1 antibody (A19666) at 1:1000 dilution.

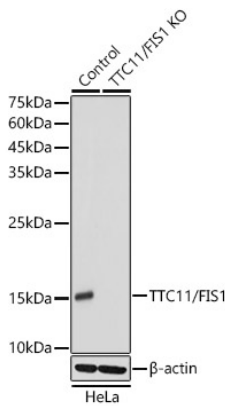
Secondary antibody: HRP Goat Anti-Rabbit IgG (H+L) (AS014) at 1:10000 dilution.

Lysates/proteins: 25ug per lane.

Blocking buffer: 3% nonfat dry milk in TBST.

Detection: ECL Basic Kit (RM00020).

Exposure time: 1s.



Western blot analysis of extracts from normal (control) and TTC11/FIS1 knockout (KO) HeLa cells, using TTC11/FIS1 antibody (A19666) at 1:1000 dilution.

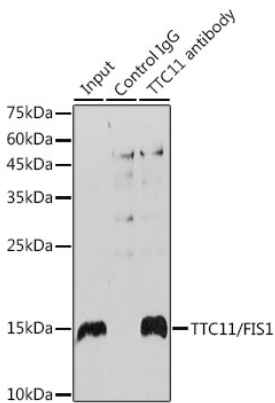
Secondary antibody: HRP Goat Anti-Rabbit IgG (H+L) (AS014) at 1:10000 dilution.

Lysates/proteins: 25ug per lane.

Blocking buffer: 3% nonfat dry milk in TBST.

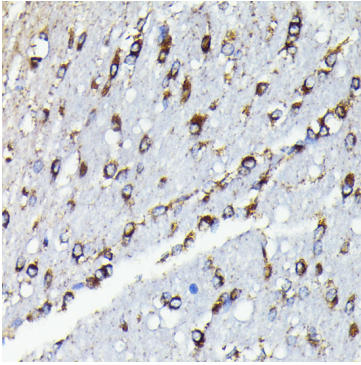
Detection: ECL Basic Kit (RM00020).

Exposure time: 1s.

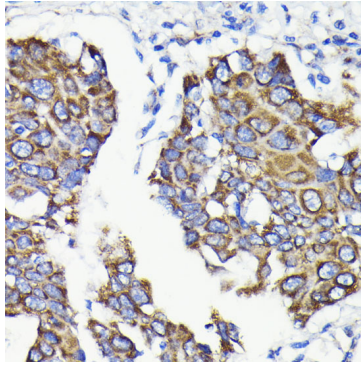


Immunoprecipitation analysis of 300ug extracts of HeLa cells using 3ug TTC11/FIS1 antibody (A19666). Western blot was performed from the immunoprecipitate using TTC11/FIS1 antibody (A19666) at a dilution of 1:1000.

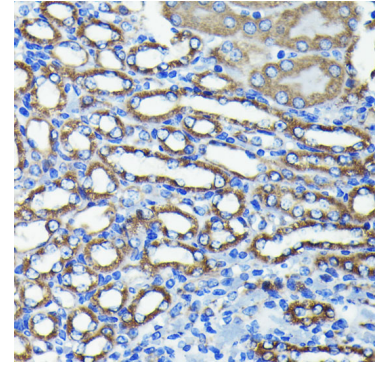
Validation Data



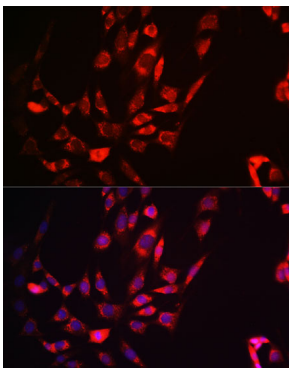
Immunohistochemistry of paraffin-embedded rat brain using TTC11/FIS1 antibody (A19666) at dilution of 1:100 (40x lens).



Immunohistochemistry of paraffin-embedded human lung cancer using TTC11/FIS1 antibody (A19666) at dilution of 1:100 (40x lens).



Immunohistochemistry of paraffin-embedded mouse kidney using TTC11/FIS1 antibody (A19666) at dilution of 1:100 (40x lens).



Immunofluorescence analysis of NIH-3T3 cells using TTC11/FIS1 antibody (A19666). Blue: DAPI for nuclear staining.