

A19665

Leader in Biomolecular Solutions for Life Science



[KD Validated] LC3B Rabbit mAb

Catalog No.: A19665

Recombinant

120 Publications

Basic Information

Observed MW

14kDa/16kDa

Calculated MW

15kDa

Category

SMab Recombinant Monoclonal
Antibody

Applications

WB,IHC-P,IF/ICC,IP,ELISA

Cross-Reactivity

Human,Mouse,Rat

CloneNo number

ARC0144

Background

The product of this gene is a subunit of neuronal microtubule-associated MAP1A and MAP1B proteins, which are involved in microtubule assembly and important for neurogenesis. Studies on the rat homolog implicate a role for this gene in autophagy, a process that involves the bulk degradation of cytoplasmic component.

Recommended Dilutions

WB 1:500 - 1:1000

IHC-P 1:50 - 1:200

IF/ICC 1:50 - 1:200

IP 0.5µg-4µg antibody for
200µg-400µg extracts
of whole cells

Immunogen Information

Gene ID

81631

Swiss Prot

Q9GZQ8

Immunogen

Recombinant fusion protein containing a sequence corresponding to amino acids 2-107 of human LC3B (Q9GZQ8).

Synonyms

LC3B; ATG8F; MAP1LC3B-a; MAP1A/1BLC3; 3B

Contact



www.abclonal.com

Product Information

Source

Rabbit

Isotype

IgG

Purification

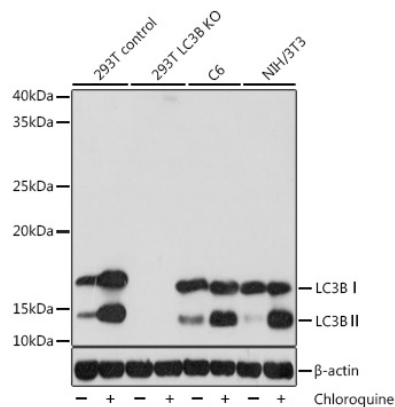
Affinity purification

Storage

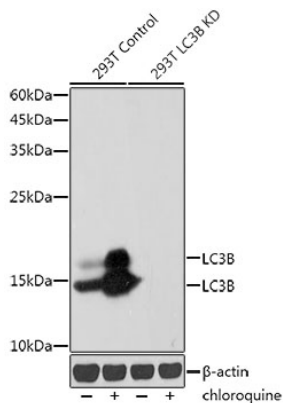
Store at -20°C. Avoid freeze / thaw cycles.

Buffer: PBS with 0.05% proclin300,0.05% BSA,50% glycerol,pH7.3.

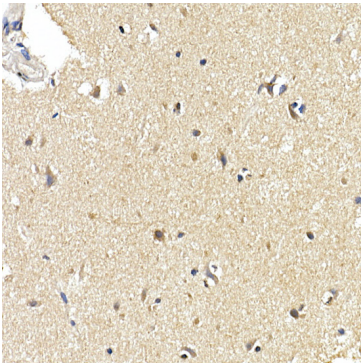
Validation Data



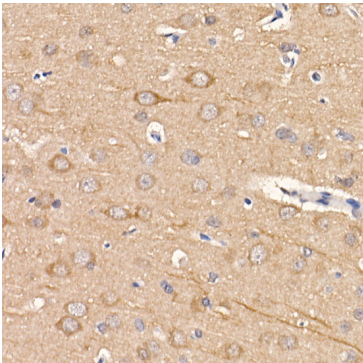
Western blot analysis of various lysates, using [KD Validated] LC3B Rabbit mAb (A19665) at 1:1000 dilution. 293T, C6 and NIH/3T3 cells were treated by Chloroquine (50 μ M) at 37°C for 20 hours.
Secondary antibody: HRP Goat Anti-Rabbit IgG (H+L) (AS014) at 1:10000 dilution.
Lysates/proteins: 25 μ g per lane.
Blocking buffer: 3% nonfat dry milk in TBST.
Detection: ECL Basic Kit (RM00020).
Exposure time: 5s.



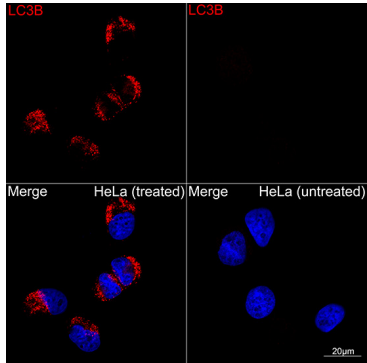
Western blot analysis of lysates from wild type (WT) and LC3B knockdown (KD) 293T cells, using [KD Validated] LC3B Rabbit mAb (A19665) at 1:1000 dilution. wild type (WT) and LC3B knockdown (KD) 293T cells were treated by Chloroquine (50 μ M) at 37°C for 20 hours.
Secondary antibody: HRP Goat Anti-Rabbit IgG (H+L) (AS014) at 1:10000 dilution.
Lysates/proteins: 25 μ g per lane.
Blocking buffer: 3% nonfat dry milk in TBST.
Detection: ECL Basic Kit (RM00020).
Exposure time: 30s.



Immunohistochemistry analysis of paraffin-embedded human brain using [KD Validated] LC3B Rabbit mAb (A19665) at dilution of 1:100 (40x lens). Perform high pressure antigen retrieval with 10 mM citrate buffer pH 6.0 before commencing with IHC staining protocol.

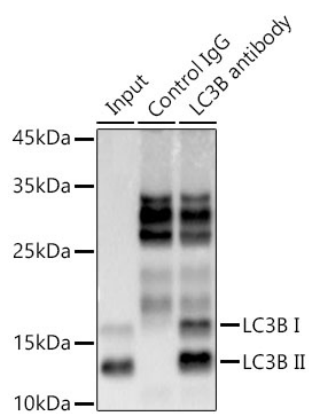


Immunohistochemistry analysis of paraffin-embedded rat brain using [KD Validated] LC3B Rabbit mAb (A19665) at dilution of 1:100 (40x lens). Perform high pressure antigen retrieval with 10 mM citrate buffer pH 6.0 before commencing with IHC staining protocol.



Confocal imaging of HeLa cells (treated with chloroquine) and HeLa cells (untreated) using [KD Validated] LC3B Rabbit mAb (A19665, dilution 1:100) (Red). DAPI was used for nuclear staining (blue). Objective: 100x.

Validation Data



Immunoprecipitation analysis of 300 µg extracts from 293T cells using 3 µg [KD Validated] LC3B Rabbit mAb (A19665). Western blot was performed from the immunoprecipitate using LC3B antibody (A19665) at a dilution of 1:1000.