

# [KO Validated] LC3B Rabbit mAb

Catalog No.: A19665 **KO** **Validated** **Recombinant** **15 Publications**

## Basic Information

### Catalog No.

A19665

### Observed MW

14KDa/16KDa

### Calculated MW

14kDa,16kDa

### Category

Primary antibody

### Applications

WB,IHC,IF,IP

### Cross-Reactivity

Human, Mouse, Rat

## Recommended Dilutions

<b>WB</b>	1:500 - 1:2000
<b>IHC</b>	1:50 - 1:200
<b>IF</b>	1:50 - 1:200
<b>IP</b>	1:50 - 1:200

## Contact

 | [www.abclonal.com](http://www.abclonal.com)

## Background

The product of this gene is a subunit of neuronal microtubule-associated MAP1A and MAP1B proteins, which are involved in microtubule assembly and important for neurogenesis. Studies on the rat homolog implicate a role for this gene in autophagy, a process that involves the bulk degradation of cytoplasmic component.

## Immunogen Information

<b>Gene ID</b>	<b>Swiss Prot</b>
81631	Q9GZQ8

### Immunogen

Recombinant fusion protein containing a sequence corresponding to amino acids 2-107 of human LC3B (Q9GZQ8).

### Synonyms

LC3B;ATG8F;MAP1LC3B-a;MAP1A/1BLC3;MAP1LC3B;LC3A/LC3B

## Product Information

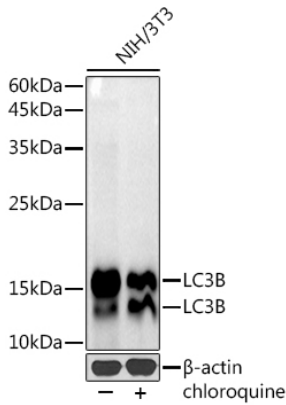
<b>Source</b>	<b>Isotype</b>	<b>Purification</b>
Rabbit	IgG	Affinity purification

### Storage

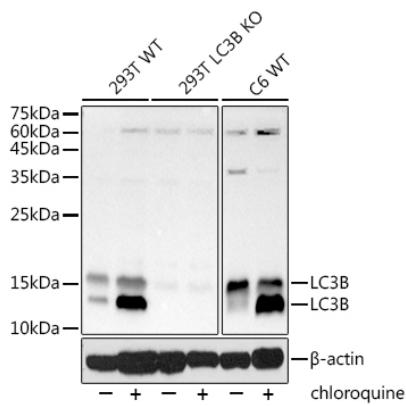
Store at -20°C. Avoid freeze / thaw cycles.

Buffer: PBS with 0.02% sodium azide,0.05% BSA,50% glycerol,pH7.3.

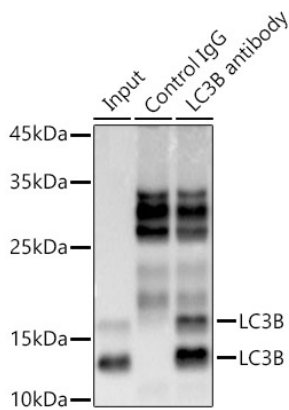
## Validation Data



Western blot analysis of extracts of NIH/3T3 cells, using LC3B antibody (A19665) at 1:1000 dilution. NIH/3T3 cells were treated by Chloroquine (50  $\mu$ M) at 37°C for 20 hours. Secondary antibody: HRP Goat Anti-Rabbit IgG (H+L) (AS014) at 1:10000 dilution. Lysates/proteins: 25ug per lane. Blocking buffer: 3% nonfat dry milk in TBST. Detection: ECL Basic Kit (RM00020). Exposure time: 60s.



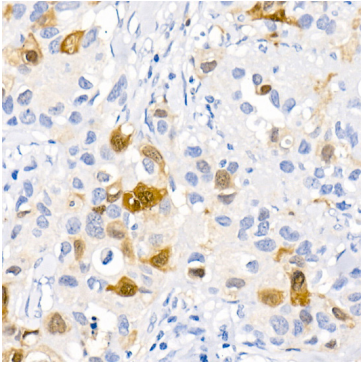
Western blot analysis of extracts from wild type (WT) and [KO Validated] LC3B Rabbit mAb knockout (KO) 293T cells, using [KO Validated] LC3B Rabbit mAb (A19665) at 1:1000 dilution. 293T and C6 cells were treated by Chloroquine (50  $\mu$ M) at 37°C for 20 hours. Secondary antibody: HRP Goat Anti-Rabbit IgG (H+L) (AS014) at 1:10000 dilution. Lysates/proteins: 25ug per lane. Blocking buffer: 3% nonfat dry milk in TBST. Detection: ECL Basic Kit (RM00020). Exposure time: 30s.



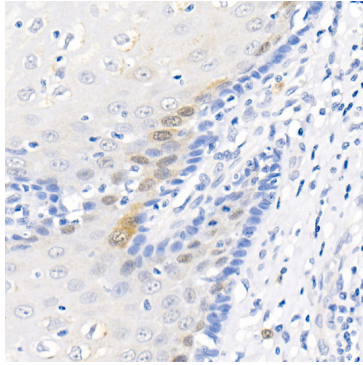
Immunoprecipitation analysis of 300ug extracts of 293T cells using 3ug LC3B antibody (A19665). Western blot was performed from the immunoprecipitate using LC3B antibody (A19665) at a dilution of 1:1000.

## Validation Data

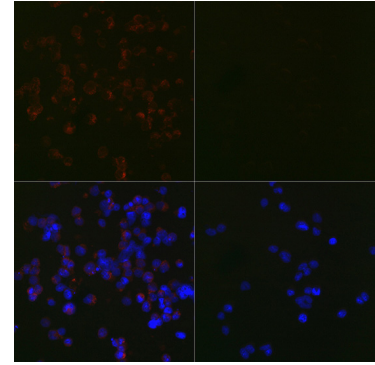
---



Immunohistochemistry of paraffin-embedded human brain using [KO Validated] LC3B Rabbit mAb (A19665) at dilution of 1:100 (40x lens). Perform microwave antigen retrieval with 10 mM PBS buffer pH 7.2 before commencing with IHC staining protocol.



Immunohistochemistry of paraffin-embedded rat brain using [KO Validated] LC3B Rabbit mAb (A19665) at dilution of 1:100 (40x lens). Perform microwave antigen retrieval with 10 mM PBS buffer pH 7.2 before commencing with IHC staining protocol.



Immunofluorescence analysis of 293T Treated with Chloroquine and 293T cells using [KO Validated] LC3B Rabbit mAb (A19665) at dilution of 1:100 (40x lens). Blue: DAPI for nuclear staining.