

A19654

Leader in Biomolecular Solutions for Life Science



[KO Validated] active + pro Caspase-3 Rabbit mAb

Catalog No.: A19654

KO Validated

Recombinant

83 Publications

Basic Information

Observed MW

17kDa/32kDa/35kDa

Calculated MW

32kDa

Category

SMab Recombinant Monoclonal Antibody

Applications

WB,ELISA

Cross-Reactivity

Human,Mouse,Rat

CloneNo number

ARC0133

Background

The protein encoded by this gene is a cysteine-aspartic acid protease that plays a central role in the execution-phase of cell apoptosis. The encoded protein cleaves and inactivates poly(ADP-ribose) polymerase while it cleaves and activates sterol regulatory element binding proteins as well as caspases 6, 7, and 9. This protein itself is processed by caspases 8, 9, and 10. It is the predominant caspase involved in the cleavage of amyloid-beta 4A precursor protein, which is associated with neuronal death in Alzheimer's disease.

Recommended Dilutions

WB 1:500 - 1:1000

Immunogen Information

Gene ID

836

Swiss Prot

P42574

Immunogen

Recombinant fusion protein containing a sequence corresponding to amino acids 29-175 of human Caspase-3 (P42574).

Synonyms

CPP32; SCA-1; CPP32B; -3

Contact



www.abclonal.com

Product Information

Source

Rabbit

Isotype

IgG

Purification

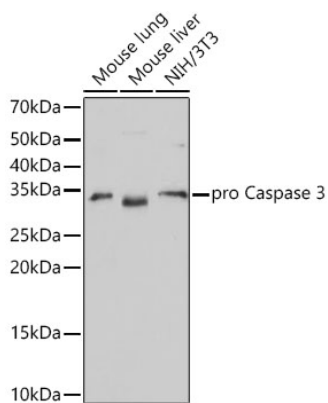
Affinity purification

Storage

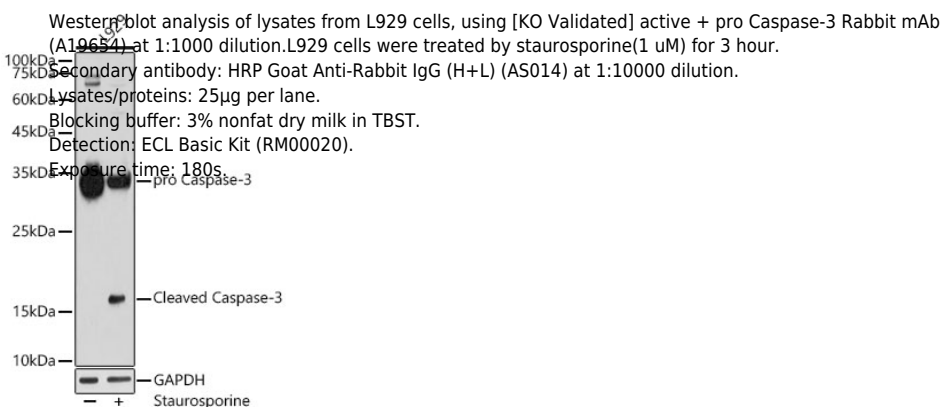
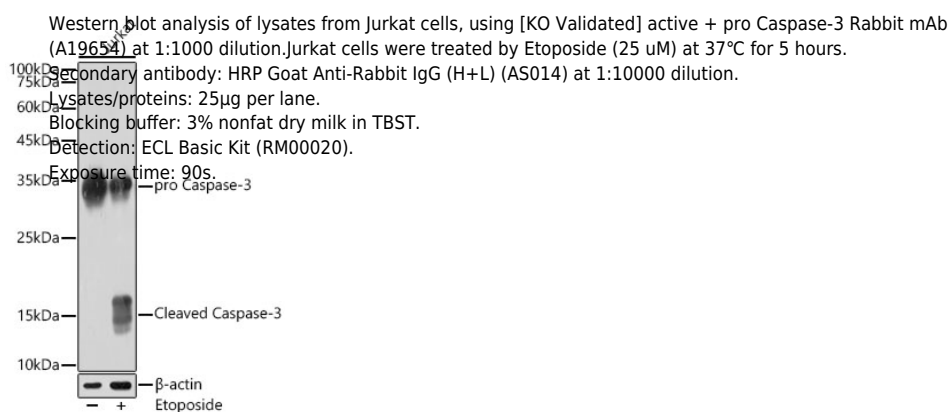
Store at -20°C. Avoid freeze / thaw cycles.

Buffer: PBS with 0.05% proclin300,0.05% BSA,50% glycerol,pH7.3.

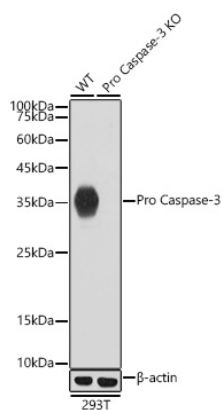
Validation Data



Western blot analysis of various lysates, using [KO Validated] active + pro Caspase-3 Rabbit mAb (A19654) at 1:1000 dilution. Secondary antibody: HRP Goat Anti-Rabbit IgG (H+L) (AS014) at 1:10000 dilution. Lysates/proteins: 25µg per lane. Blocking buffer: 3% nonfat dry milk in TBST. Detection: ECL Basic Kit (RM00020). Exposure time: 3min.



Validation Data



Western blot analysis of lysates from wild type (WT) and active + pro Caspase-3 knockout (KO) 293T cells, using [KO Validated] active + pro Caspase-3 Rabbit mAb (A19654) at 1:1000 dilution. Secondary antibody: HRP Goat Anti-Rabbit IgG (H+L) (AS014) at 1:10000 dilution. Lysates/proteins: 25µg per lane. Blocking buffer: 3% nonfat dry milk in TBST. Detection: ECL Basic Kit (RM00020). Exposure time: 30s.