

ABCF1 Rabbit mAb

Catalog No.: A19621 **Recombinant**

Basic Information

Observed MW

120kDa

Calculated MW

96kDa

Category

Primary antibody

Applications

ELISA, WB, IHC-P

Cross-Reactivity

Human, Rat

CloneNo number

ARC2199

Recommended Dilutions

WB	1:500 - 1:1000
IHC-P	1:50 - 1:200

Contact

 | www.abclonal.com

Background

The protein encoded by this gene is a member of the superfamily of ATP-binding cassette (ABC) transporters. ABC proteins transport various molecules across extra- and intra-cellular membranes. ABC genes are divided into seven distinct subfamilies (ABC1, MDR/TAP, MRP, ALD, OABP, GCN20, White). This protein is a member of the GCN20 subfamily. Unlike other members of the superfamily, this protein lacks the transmembrane domains which are characteristic of most ABC transporters. This protein may be regulated by tumor necrosis factor-alpha and play a role in enhancement of protein synthesis and the inflammation process.

Immunogen Information

Gene ID	Swiss Prot
23	Q8NE71

Immunogen

A synthetic peptide corresponding to a sequence within amino acids 746-845 of human ABCF1 (Q8NE71).

Synonyms

ABC27; ABC50; ABCF1

Product Information

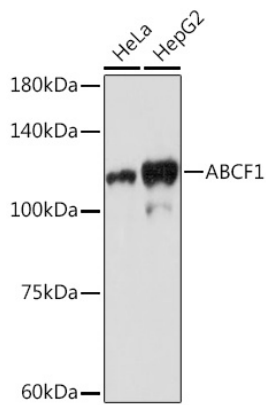
Source	Isotype	Purification
Rabbit	IgG	Affinity purification

Storage

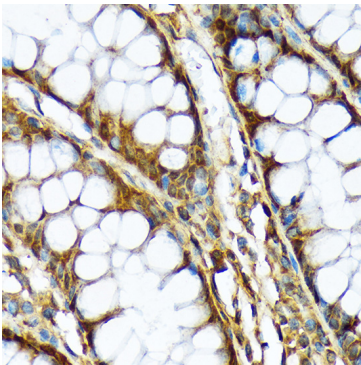
Store at -20°C. Avoid freeze / thaw cycles.

Buffer: PBS with 0.02% sodium azide, 0.05% BSA, 50% glycerol, pH7.3.

Validation Data



Western blot analysis of various lysates using ABCF1 Rabbit mAb (A19621) at 1:1000 dilution.
Secondary antibody: HRP Goat Anti-Rabbit IgG (H+L) (AS014) at 1:10000 dilution.
Lysates/proteins: 25µg per lane.
Blocking buffer: 3% nonfat dry milk in TBST.
Detection: ECL Basic Kit (RM00020).
Exposure time: 180s.



Immunohistochemistry analysis of ABCF1 in paraffin-embedded human colon using ABCF1 Rabbit mAb (A19621) at dilution of 1:100 (40x lens). Perform microwave antigen retrieval with 10 mM Tris/EDTA buffer pH 9.0 before commencing with IHC staining protocol.