

ATG12 Rabbit mAb

Catalog No.: A19610 **Recombinant** **2 Publications**

Basic Information

Observed MW

55kDa

Calculated MW

15kDa

Category

Primary antibody

Applications

ELISA, WB

Cross-Reactivity

Human, Mouse, Rat

CloneNo number

ARC0089

Background

Autophagy is a process of bulk protein degradation in which cytoplasmic components, including organelles, are enclosed in double-membrane structures called autophagosomes and delivered to lysosomes or vacuoles for degradation. ATG12 is the human homolog of a yeast protein involved in autophagy.

Recommended Dilutions

WB 1:500 - 1:1000

Immunogen Information

Gene ID

9140

Swiss Prot

O94817

Immunogen

A synthetic peptide corresponding to a sequence within amino acids 41-140 of human Apg12 (O94817).

Synonyms

APG12; FBR93; APG12L; HAPG12; ATG12

Contact

 | www.abclonal.com

Product Information

Source

Rabbit

Isotype

IgG

Purification

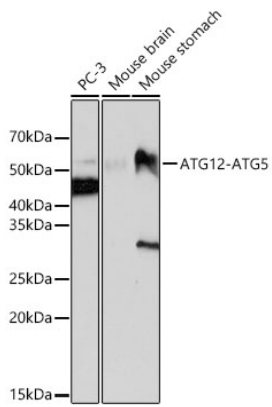
Affinity purification

Storage

Store at -20°C. Avoid freeze / thaw cycles.

Buffer: PBS with 0.02% sodium azide, 0.05% BSA, 50% glycerol, pH7.3.

Validation Data



Western blot analysis of extracts of various cell lines, using ATG12 antibody (A19610) at 1:1000 dilution.

Secondary antibody: HRP Goat Anti-Rabbit IgG (H+L) (AS014) at 1:10000 dilution.

Lysates/proteins: 25µg per lane.

Blocking buffer: 3% nonfat dry milk in TBST.

Detection: ECL Basic Kit (RM00020).

Exposure time: 3min.