

[KO Validated] Lamin A/C Rabbit mAb

Catalog No.: A19524 **KO Validated** **Recombinant** **10 Publications**

Basic Information

Observed MW

68kDa/72kDa

Calculated MW

74kDa

Category

Primary antibody

Applications

ELISA, WB, IHC-P, IF/ICC, IP

Cross-Reactivity

Human, Mouse, Rat

CloneNo number

ARC5001-08

Recommended Dilutions

WB	1:10000 - 1:600000
IHC-P	1:50 - 1:400
IF/ICC	1:50 - 1:200
IP	1:10000 - 1:120000

Contact

 | www.abclonal.com

Background

The protein encoded by this gene is part of the nuclear lamina, a two-dimensional matrix of proteins located next to the inner nuclear membrane. The lamin family of proteins make up the matrix and are highly conserved in evolution. During mitosis, the lamina matrix is reversibly disassembled as the lamin proteins are phosphorylated. Lamin proteins are thought to be involved in nuclear stability, chromatin structure and gene expression. Vertebrate lamins consist of two types, A and B. Alternative splicing results in multiple transcript variants. Mutations in this gene lead to several diseases: Emery-Dreifuss muscular dystrophy, familial partial lipodystrophy, limb girdle muscular dystrophy, dilated cardiomyopathy, Charcot-Marie-Tooth disease, and Hutchinson-Gilford progeria syndrome.

Immunogen Information

Gene ID	Swiss Prot
4000	P02545

Immunogen

Recombinant fusion protein containing a sequence corresponding to amino acids 403-572 of human Lamin A/C (NP_733821.1).

Synonyms

FPL; IDC; LFP; CDDC; EMD2; FPLD; HGPS; LDP1; LMN1; LMNC; MADA; PRO1; CDCD1; CMD1A; FPLD2; LMNL1; CMT2B1; LGMD1B; /C

Product Information

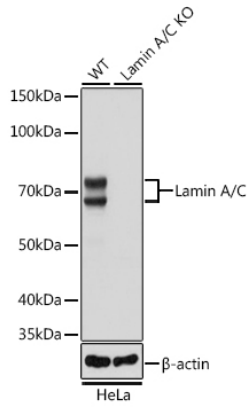
Source	Isotype	Purification
Rabbit	IgG	Affinity purification

Storage

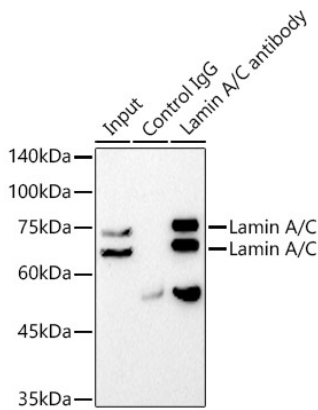
Store at -20°C. Avoid freeze / thaw cycles.

Buffer: PBS with 0.01% thimerosal, 0.05% BSA, 50% glycerol, pH7.3.

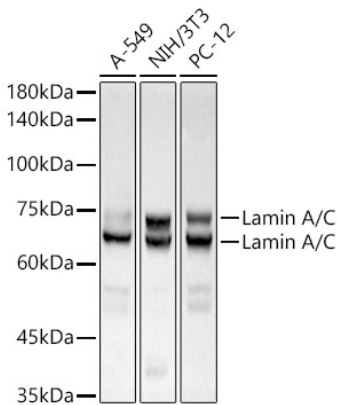
Validation Data



Western blot analysis of extracts from wild type (WT) and Lamin A/C knockout (KO) HeLa cells, using Lamin A/C antibody (A19524) at 1:50000 dilution.
Secondary antibody: HRP Goat Anti-Rabbit IgG (H+L) (AS014) at 1:10000 dilution.
Lysates/proteins: 25µg per lane.
Blocking buffer: 3% nonfat dry milk in TBST.
Detection: ECL Basic Kit (RM00020).
Exposure time: 1s.

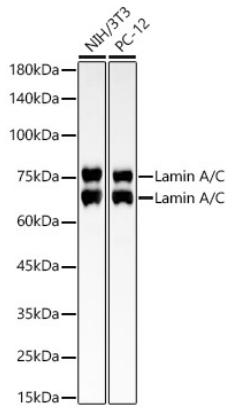


Immunoprecipitation analysis of 300 µg extracts from PC-12 cells using 3 µg [KO Validated] Lamin A/C Rabbit mAb (A19524). Western blot was performed from the immunoprecipitate using [KO Validated] Lamin A/C Rabbit mAb (A19524) at a dilution of 1:100000.



Western blot analysis of extracts of various cell lines, using [KO Validated] Lamin A/C Rabbit mAb antibody (A19524) at 1:500000 dilution.
Secondary antibody: HRP Goat Anti-Rabbit IgG (H+L) (AS014) at 1:10000 dilution.
Lysates/proteins: 25µg per lane.
Blocking buffer: 3% nonfat dry milk in TBST.
Detection: ECL Basic Kit (RM00020).
Exposure time: 3s.

Validation Data



Western blot analysis of various lysates, using [KO Validated] Lamin A/C Rabbit mAb (A19524) at 1:300000 dilution.

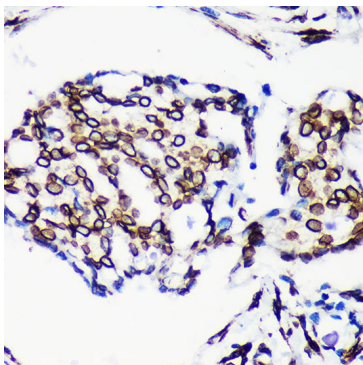
Secondary antibody: HRP Goat Anti-Rabbit IgG (H+L) (AS014) at 1:10000 dilution.

Lysates/proteins: 25µg per lane.

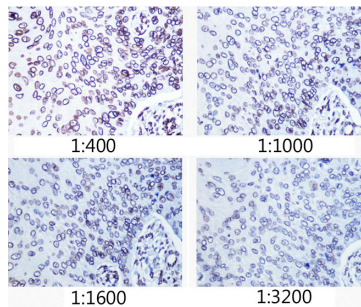
Blocking buffer: 3% nonfat dry milk in TBST.

Detection: ECL Basic Kit (RM00020).

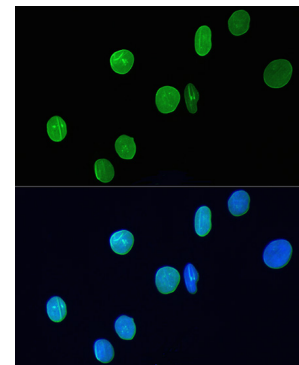
Exposure time: 30s.



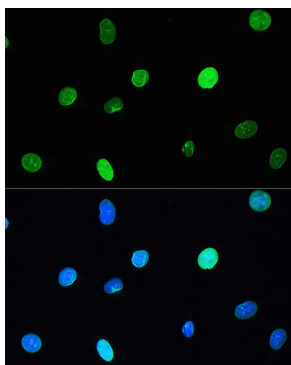
Immunohistochemistry analysis of paraffin-embedded Human breast cancer using Lamin A/C antibody (A19524) at dilution of 1:200 (40x lens). Perform microwave antigen retrieval with 10 mM PBS buffer pH 7.2 before commencing with IHC staining protocol.



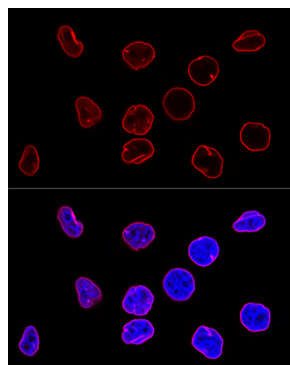
Immunohistochemistry analysis of paraffin-embedded human esophageal cancer using Lamin A/C antibody (A19524) at dilution of 1:400 - 1:3200 (40x lens). Perform microwave antigen retrieval with 10 mM PBS buffer pH 7.2 before commencing with IHC staining protocol.



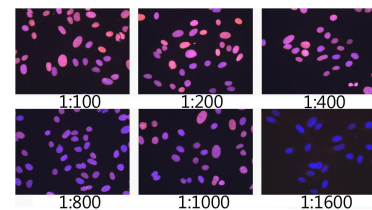
Immunofluorescence analysis of H9C2 cells using Lamin A/C antibody (A19524) at dilution of 1:200. Blue: DAPI for nuclear staining.



Immunofluorescence analysis of L929 cells using Lamin A/C antibody (A19524) at dilution of 1:200. Blue: DAPI for nuclear staining.



Confocal immunofluorescence analysis of HeLa cells using Lamin A/C antibody (A19524) at dilution of 1:100. Blue: DAPI for nuclear staining.



Immunofluorescence analysis of U-2 OS cells using Lamin A/C antibody (A19524) at dilution of 1:100 - 1:1600. Blue: DAPI for nuclear staining.