

[KO Validated] Lamin A/C Rabbit mAb

Catalog No.: A19524 **KO Validated** **Recombinant** **3 Publications**

Basic Information

Catalog No.

A19524

Observed MW

62kDa/74kDa

Calculated MW

62-74kDa

Category

Primary antibody

Applications

WB, IHC, IF, IP

Cross-Reactivity

Human, Mouse, Rat

Recommended Dilutions

WB	1:50000 - 1:200000
IHC	1:50 - 1:1000
IF	1:50 - 1:1000
IP	1:50 - 1:200

Contact

 | www.abclonal.com

Background

The nuclear lamina consists of a two-dimensional matrix of proteins located next to the inner nuclear membrane. The lamin family of proteins make up the matrix and are highly conserved in evolution. During mitosis, the lamina matrix is reversibly disassembled as the lamin proteins are phosphorylated. Lamin proteins are thought to be involved in nuclear stability, chromatin structure and gene expression. Vertebrate lamins consist of two types, A and B. Alternative splicing results in multiple transcript variants. Mutations in this gene lead to several diseases: Emery-Dreifuss muscular dystrophy, familial partial lipodystrophy, limb girdle muscular dystrophy, dilated cardiomyopathy, Charcot-Marie-Tooth disease, and Hutchinson-Gilford progeria syndrome.

Immunogen Information

Gene ID	Swiss Prot
4000	P02545

Immunogen

Recombinant protein of human Lamin A/C.

Synonyms

LMNA;CDCD1;CDDC;CMD1A;CMT2B1;EMD2;FPL;FPLD;FPLD2;HGPS;IDC;LDP1;LFP;LGMD1B;LMN1;LMNC;LMNL1;MADA;PRO1;lamin;Lamin A/C

Product Information

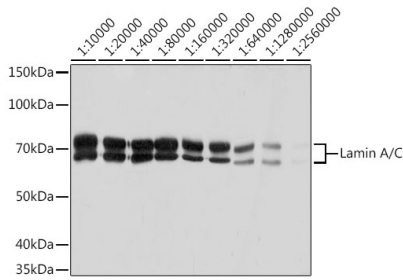
Source	Isotype	Purification
Rabbit	IgG	Affinity purification

Storage

Store at -20°C. Avoid freeze / thaw cycles.

Buffer: PBS with 0.02% sodium azide,0.05% BSA,50% glycerol,pH7.3.

Validation Data



Western blot analysis of extracts of HeLa cells, using Lamin A/C antibody (A19524) at 1:10000-1:2560000 dilution.

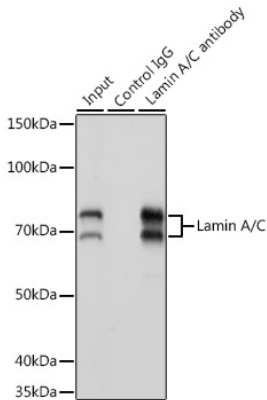
Secondary antibody: HRP Goat Anti-Rabbit IgG (H+L) (AS014) at 1:10000 dilution.

Lysates/proteins: 25ug per lane.

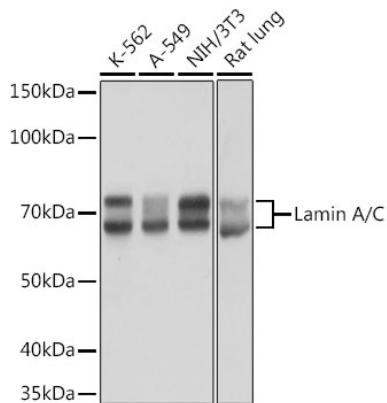
Blocking buffer: 3% nonfat dry milk in TBST.

Detection: ECL Basic Kit (RM00020).

Exposure time: 1s.



Immunoprecipitation analysis of 200ug extracts of K-562 cells using 3ug Lamin A/C antibody (A19524). Western blot was performed from the immunoprecipitate using Lamin A/C antibody (A19524) at a dilution of 1:20000.



Western blot analysis of extracts of various cell lines, using Lamin A/C antibody (A19524) at 1:50000 dilution.

Secondary antibody: HRP Goat Anti-Rabbit IgG (H+L) (AS014) at 1:10000 dilution.

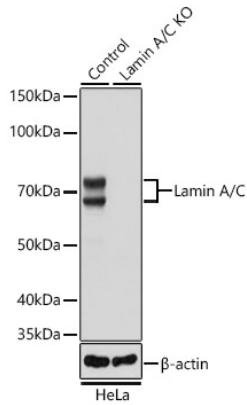
Lysates/proteins: 25ug per lane.

Blocking buffer: 3% nonfat dry milk in TBST.

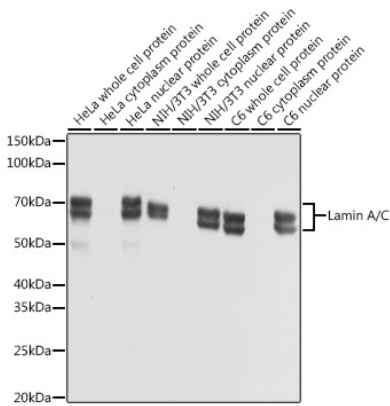
Detection: ECL Basic Kit (RM00020).

Exposure time: 1s.

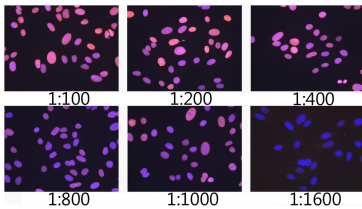
Validation Data



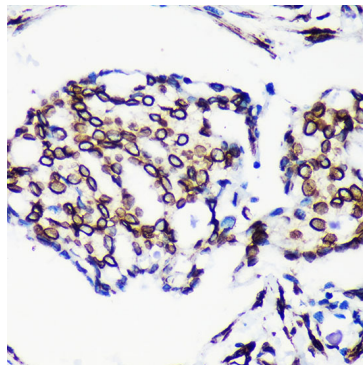
Western blot analysis of extracts from normal (control) and Lamin A/C knockout (KO) HeLa cells, using Lamin A/C antibody (A19524) at 1:50000 dilution.
 Secondary antibody: HRP Goat Anti-Rabbit IgG (H+L) (AS014) at 1:10000 dilution.
 Lysates/proteins: 25ug per lane.
 Blocking buffer: 3% nonfat dry milk in TBST.
 Detection: ECL Basic Kit (RM00020).
 Exposure time: 1s.



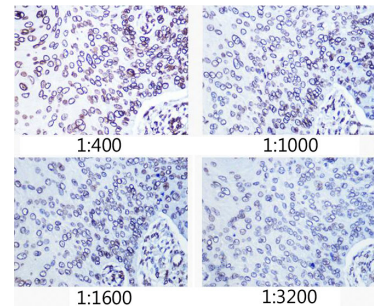
Western blot analysis of extracts of various cell lines, using Lamin A/C antibody (A19524) at 1:10000 dilution.
 Secondary antibody: HRP Goat Anti-Rabbit IgG (H+L) (AS014) at 1:10000 dilution.
 Lysates/proteins: 25ug per lane.
 Blocking buffer: 3% nonfat dry milk in TBST.
 Detection: ECL Basic Kit (RM00020).
 Exposure time: 1s.



Immunofluorescence analysis of U2OS cells using Lamin A/C antibody (A19524) at dilution of 1:100 - 1:1600. Blue: DAPI for nuclear staining.

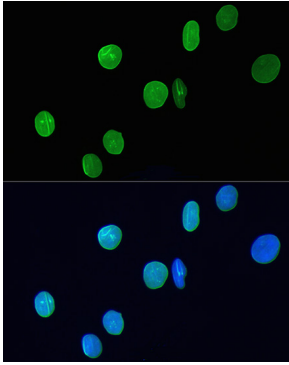


Immunohistochemistry of paraffin-embedded Human breast cancer using Lamin A/C antibody (A19524) at dilution of 1:200 (40x lens). Perform microwave antigen retrieval with 10 mM PBS buffer pH 7.2 before commencing with IHC staining protocol.

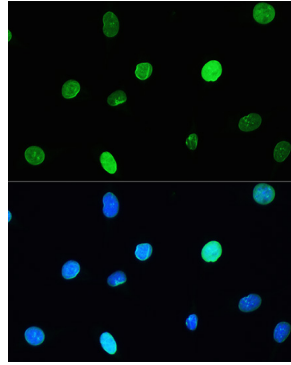


Immunohistochemistry of paraffin-embedded human esophageal cancer using Lamin A/C antibody (A19524) at dilution of 1:400 - 1:3200 (40x lens). Perform microwave antigen retrieval with 10 mM PBS buffer pH 7.2 before commencing with IHC staining protocol.

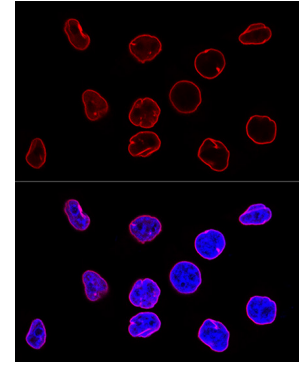
Validation Data



Immunofluorescence analysis of H9C2 cells using Lamin A/C antibody (A19524) at dilution of 1:200. Blue: DAPI for nuclear staining.



Immunofluorescence analysis of L929 cells using Lamin A/C antibody (A19524) at dilution of 1:200. Blue: DAPI for nuclear staining.



Confocal immunofluorescence analysis of HeLa cells using Lamin A/C antibody (A19524) at dilution of 1:100. Blue: DAPI for nuclear staining.