

A19188

Leader in Biomolecular Solutions for Life Science



## OsELF3 Rabbit pAb

Catalog No.: A19188

### Basic Information

**Observed MW**

83kDa

**Calculated MW**

82kDa

**Category**

Polyclonal Antibody

**Applications**

WB,ELISA

**Cross-Reactivity**

Oryza sativa

### Background

Involved in the regulation of flowering time under short day (SD) and long day (LD) conditions. Functions as floral promoter by negatively regulating GHD7, a repressor of the photoperiodic control of flowering. Acts as floral activator in the LD photoperiodic pathway. Involved in blue light-induced activation of EHD1 expression to promote flowering under SD conditions

### Recommended Dilutions

WB 1:500 - 1:2000

### Immunogen Information

**Gene ID**

4340087

**Swiss Prot**

Q9SNQ6

**Immunogen**

Recombinant fusion protein containing a sequence corresponding to amino acids 1-172 of Oryza sativa OsELF3. (Q9SNQ6).

**Synonyms**

Ef7; HD3B; Hd-q; Hd17; ELF3-1; OsELF3; OsELF3-1; OsJ\_20086; OsELF3

### Contact



[www.abclonal.com](http://www.abclonal.com)

### Product Information

**Source**

Rabbit

**Isotype**

IgG

**Purification**

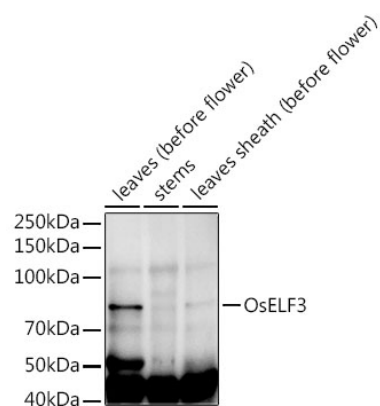
Affinity purification

**Storage**

Store at -20°C. Avoid freeze / thaw cycles.

Buffer: PBS with 0.02% sodium azide, 50% glycerol, pH7.3.

## Validation Data



Western blot analysis of extracts of various tissues from the japonica rice (*Oryza sativa* L.) variety Zhonghua 11, using OsELF3 Rabbit pAb (A19188) at 1:1000 dilution.  
Secondary antibody: HRP Goat Anti-Rabbit IgG (H+L) (AS014) at 1:10000 dilution.  
Lysates/proteins: 25µg per lane.  
Blocking buffer: 3% nonfat dry milk in TBST.  
Detection: ECL Enhanced Kit (RM00021).  
Exposure time: 120s.