

A19187

Leader in Biomolecular Solutions for Life Science



## EHD1 Rabbit pAb

Catalog No.: A19187

### Basic Information

#### Observed MW

50kDa

#### Calculated MW

39kDa

#### Category

Polyclonal Antibody

#### Applications

WB,ELISA

#### Cross-Reactivity

Oryza sativa

### Background

Transcriptional activator that acts as floral inducer to promote short-day (SD) flowering pathway. Activates HD3A and other FT-like genes independently from HD1. May also activate MADS-box transcription factors involved in flowering regulation . Functions as a response regulator involved in His-to-Asp phosphorelay signal transduction system. Phosphorylation of the Asp residue in the receiver domain activates the ability of the protein to promote the transcription of target genes. May directly activate some type-A response regulators in response to cytokinins

### Recommended Dilutions

WB 1:500 - 1:2000

### Immunogen Information

#### Gene ID

107276289

#### Swiss Prot

Q7Y0W5

#### Immunogen

Recombinant protein of Oryza sativa EHD1 .

#### Synonyms

ef1; Ehd1; RR30; OsJ\_31808; EHD1

### Contact



[www.abclonal.com](http://www.abclonal.com)

### Product Information

#### Source

Rabbit

#### Isotype

IgG

#### Purification

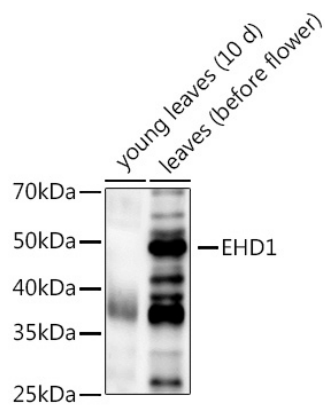
Affinity purification

#### Storage

Store at -20°C. Avoid freeze / thaw cycles.

Buffer: PBS with 0.02% sodium azide,50% glycerol,pH7.3.

## Validation Data



Western blot analysis of extracts of various tissues from the japonica rice (*Oryza sativa* L.) variety Zhonghua 11, using EHD1 Rabbit pAb (A19187) at 1:1000 dilution.  
Secondary antibody: HRP Goat Anti-Rabbit IgG (H+L) (AS014) at 1:10000 dilution.  
Lysates/proteins: 25µg per lane.  
Blocking buffer: 3% nonfat dry milk in TBST.  
Detection: ECL Enhanced Kit (RM00021).  
Exposure time: 120s.