

[KO Validated] Smad3 Rabbit mAb

Catalog No.: A19115 **KO Validated** **Recombinant** **4 Publications**

Basic Information

Catalog No.

A19115

Observed MW

58kDa

Calculated MW

48kDa

Category

Primary antibody

Applications

WB, IHC, IF, IP

Cross-Reactivity

Human, Mouse, Rat

Background

The protein encoded by this gene belongs to the SMAD, a family of proteins similar to the gene products of the Drosophila gene 'mothers against decapentaplegic' (Mad) and the C. elegans gene Sma. SMAD proteins are signal transducers and transcriptional modulators that mediate multiple signaling pathways. This protein functions as a transcriptional modulator activated by transforming growth factor-beta and is thought to play a role in the regulation of carcinogenesis. [provided by RefSeq, Apr 2009]

Recommended Dilutions

WB	1:500 - 1:2000
IHC	1:50 - 1:200
IF	1:50 - 1:200
IP	1:50 - 1:200

Immunogen Information

Gene ID	Swiss Prot
4088	P84022

Immunogen

A synthesized peptide derived from human Smad3

Synonyms

HSPC193;HsT17436;JV15-2;LDS1C;LDS3;MADH3;SMAD3

Contact

 | www.abclonal.com

Product Information

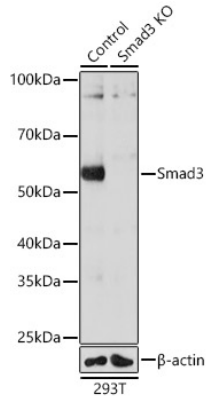
Source	Isotype	Purification
Rabbit	IgG	Affinity purification

Storage

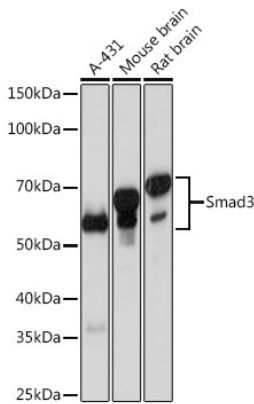
Store at -20°C. Avoid freeze / thaw cycles.

Buffer: PBS with 0.02% sodium azide, 0.05% BSA, 50% glycerol, pH7.3.

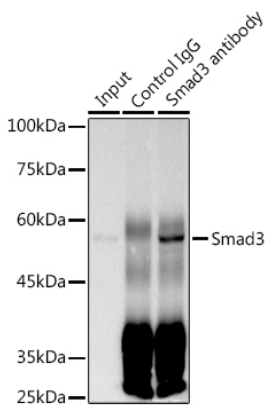
Validation Data



Western blot analysis of extracts from normal (control) and Smad3 knockout (KO) 293T cells, using Smad3 antibody (A19115) at 1:1000 dilution.
Secondary antibody: HRP Goat Anti-Rabbit IgG (H+L) (AS014) at 1:10000 dilution.
Lysates/proteins: 25ug per lane.
Blocking buffer: 3% nonfat dry milk in TBST.
Detection: ECL Basic Kit (RM00020).
Exposure time: 10s.

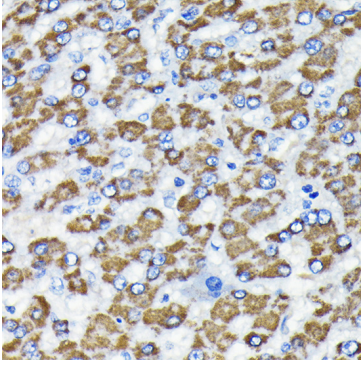


Western blot analysis of extracts of various cell lines, using Smad3 antibody (A19115) at 1:1000 dilution.
Secondary antibody: HRP Goat Anti-Rabbit IgG (H+L) (AS014) at 1:10000 dilution.
Lysates/proteins: 25ug per lane.
Blocking buffer: 3% nonfat dry milk in TBST.
Detection: ECL Basic Kit (RM00020).
Exposure time: 10s.

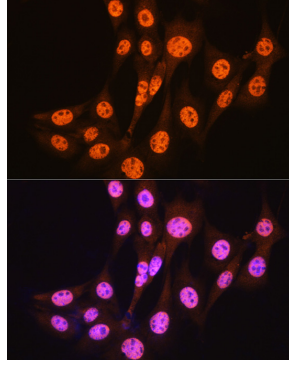


Immunoprecipitation analysis of 300ug extracts of A-431 cells using 3ug Smad3 antibody (A19115). Western blot was performed from the immunoprecipitate using Smad3 antibody (A19115) at a dilution of 1:500.

Validation Data



Immunohistochemistry of paraffin-embedded human liver using Smad3 Rabbit mAb (A19115) at dilution of 1:100 (40x lens). Perform microwave antigen retrieval with 10 mM PBS buffer pH 7.2 before commencing with IHC staining protocol.



Immunofluorescence analysis of NIH-3T3 cells using [KO Validated] Smad3 Rabbit mAb (A19115) at dilution of 1:100 (40x lens). Blue: DAPI for nuclear staining.