

A19114

Leader in Biomolecular Solutions for Life Science



## [KD Validated] Smad2 Rabbit mAb

Catalog No.: A19114 **Recombinant** **14 Publications**

### Basic Information

#### Observed MW

58kDa

#### Calculated MW

52kDa

#### Category

SMab Recombinant Monoclonal Antibody

#### Applications

WB,IF/ICC,IP,ELISA

#### Cross-Reactivity

Human,Mouse,Rat

#### CloneNo number

ARC0343

### Background

The protein encoded by this gene belongs to the SMAD, a family of proteins similar to the gene products of the Drosophila gene 'mothers against decapentaplegic' (Mad) and the C. elegans gene Sma. SMAD proteins are signal transducers and transcriptional modulators that mediate multiple signaling pathways. This protein mediates the signal of the transforming growth factor (TGF)-beta, and thus regulates multiple cellular processes, such as cell proliferation, apoptosis, and differentiation. This protein is recruited to the TGF-beta receptors through its interaction with the SMAD anchor for receptor activation (SARA) protein. In response to TGF-beta signal, this protein is phosphorylated by the TGF-beta receptors. The phosphorylation induces the dissociation of this protein with SARA and the association with the family member SMAD4. The association with SMAD4 is important for the translocation of this protein into the nucleus, where it binds to target promoters and forms a transcription repressor complex with other cofactors. This protein can also be phosphorylated by activin type 1 receptor kinase, and mediates the signal from the activin. Alternatively spliced transcript variants have been observed for this gene.

### Recommended Dilutions

**WB** 1:500 - 1:2000

**IF/ICC** 1:50 - 1:200

**IP** 0.5µg-4µg antibody for  
200µg-400µg extracts of  
whole cells

### Immunogen Information

#### Gene ID

4087

#### Swiss Prot

Q15796

#### Immunogen

A synthetic peptide corresponding to a sequence within amino acids 1-100 of human Smad2 (Q15796).

#### Synonyms

JV18; LDS6; CHTD8; MADH2; MADR2; JV18-1; hMAD-2; hSMAD2; [KD Validated] Smad2

### Contact



[www.abclonal.com](http://www.abclonal.com)

### Product Information

#### Source

Rabbit

#### Isotype

IgG

#### Purification

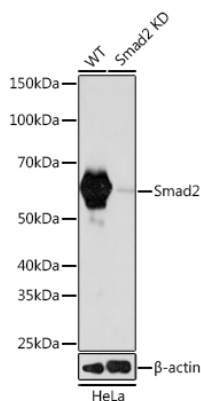
Affinity purification

#### Storage

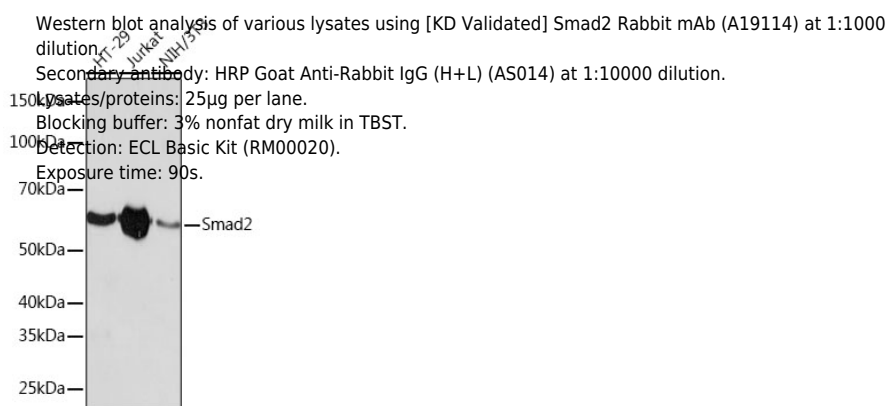
Store at -20°C. Avoid freeze / thaw cycles.

Buffer: PBS with 0.02% sodium azide,0.05% BSA,50% glycerol,pH7.3.

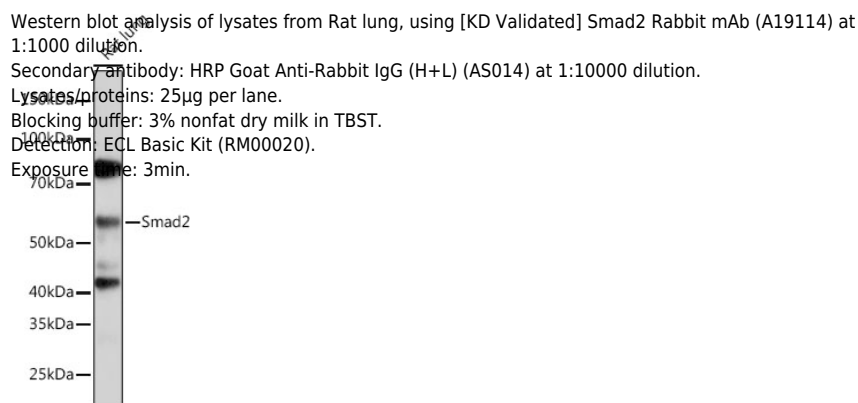
## Validation Data



Western blot analysis of lysates from wild type (WT) and Smad2 knockdown (KD) HeLa cells, using [KD Validated] Smad2 Rabbit mAb (A19114) at 1:1000 dilution.  
Secondary antibody: HRP Goat Anti-Rabbit IgG (H+L) (AS014) at 1:10000 dilution.  
Lysates/proteins: 25µg per lane.  
Blocking buffer: 3% nonfat dry milk in TBST.  
Detection: ECL Basic Kit (RM00020).  
Exposure time: 90s.

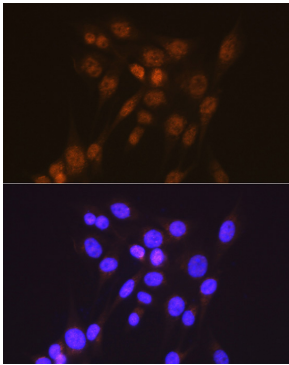


Western blot analysis of various lysates using [KD Validated] Smad2 Rabbit mAb (A19114) at 1:1000 dilution.  
Secondary antibody: HRP Goat Anti-Rabbit IgG (H+L) (AS014) at 1:10000 dilution.  
Lysates/proteins: 25µg per lane.  
Blocking buffer: 3% nonfat dry milk in TBST.  
Detection: ECL Basic Kit (RM00020).  
Exposure time: 90s.

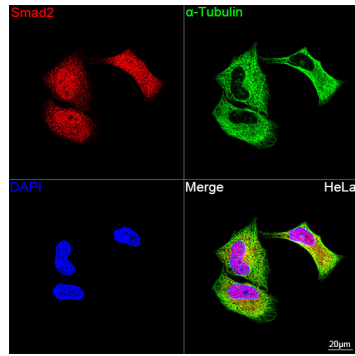


Western blot analysis of lysates from Rat lung, using [KD Validated] Smad2 Rabbit mAb (A19114) at 1:1000 dilution.  
Secondary antibody: HRP Goat Anti-Rabbit IgG (H+L) (AS014) at 1:10000 dilution.  
Lysates/proteins: 25µg per lane.  
Blocking buffer: 3% nonfat dry milk in TBST.  
Detection: ECL Basic Kit (RM00020).  
Exposure time: 3min.

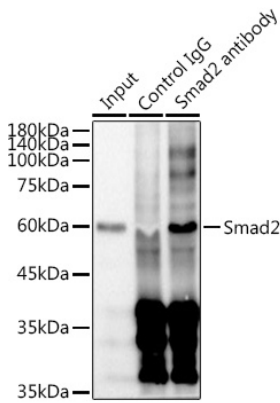
## Validation Data



Immunofluorescence analysis of NIH/3T3 cells using [KD Validated] Smad2 Rabbit mAb (A19114) at dilution of 1:100 (40x lens). Secondary antibody: Cy3 Goat Anti-Rabbit IgG (H+L) (AS007) at 1:500 dilution. Blue: DAPI for nuclear staining.



Confocal imaging of HeLa cells using [KD Validated] Smad2 Rabbit mAb (A19114, dilution 1:100) followed by a further incubation with Cy3 Goat Anti-Rabbit IgG (H+L) (AS007, dilution 1:500) (Red). The cells were counterstained with  $\alpha$ -Tubulin Mouse mAb (AC012, dilution 1:400) followed by incubation with ABflo® 488-conjugated Goat Anti-Mouse IgG (H+L) Ab (AS076, dilution 1:500) (Green). DAPI was used for nuclear staining (Blue). Objective: 100x.



Immunoprecipitation analysis of 300  $\mu$ g extracts of HeLa cells using 3  $\mu$ g Smad2 antibody (A19114). Western blot was performed from the immunoprecipitate using Smad2 antibody (A19114) at a dilution of 1:1000.