

A19062

Leader in Biomolecular Solutions for Life Science



# [KD Validated] Heme Oxygenase 1 (HO-1/HMOX1) Rabbit mAb

Catalog No.: A19062

Recombinant

39 Publications

## Basic Information

### Observed MW

33kDa

### Calculated MW

33kDa

### Category

SMab Recombinant Monoclonal Antibody

### Applications

WB, IHC-P, IF/ICC, ELISA

### Cross-Reactivity

Human, Mouse, Rat

### CloneNo number

ARC53508

## Background

Heme oxygenase, an essential enzyme in heme catabolism, cleaves heme to form biliverdin, which is subsequently converted to bilirubin by biliverdin reductase, and carbon monoxide, a putative neurotransmitter. Heme oxygenase activity is induced by its substrate heme and by various nonheme substances. Heme oxygenase occurs as 2 isozymes, an inducible heme oxygenase-1 and a constitutive heme oxygenase-2. HMOX1 and HMOX2 belong to the heme oxygenase family.

## Recommended Dilutions

WB	1:2000 - 1:10000
IHC-P	1:50 - 1:200
IF/ICC	1:50 - 1:200

## Immunogen Information

### Gene ID

3162

### Swiss Prot

P09601

### Immunogen

Recombinant fusion protein containing a sequence corresponding to amino acids 1-265 of human Heme Oxygenase 1 (HO-1/HMOX1) (NP\_002124.1).

### Synonyms

HO-1; HSP32; HMOX1D; bK286B10

## Contact



[www.abclonal.com](http://www.abclonal.com)

## Product Information

### Source

Rabbit

### Isotype

IgG

### Purification

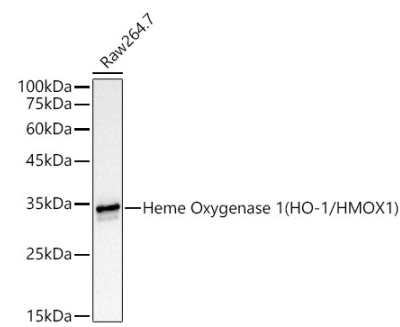
Affinity purification

### Storage

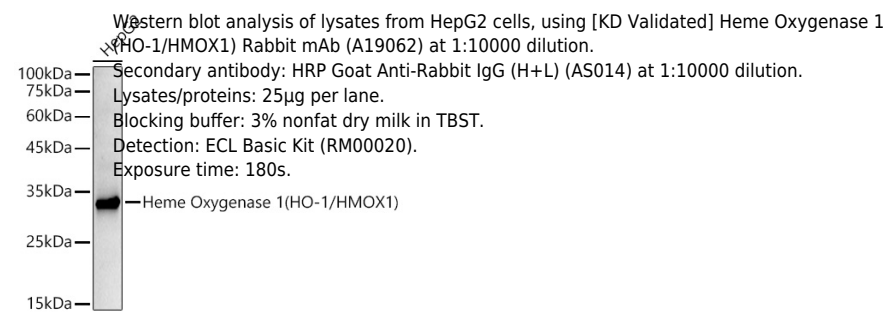
Store at -20°C. Avoid freeze / thaw cycles.

Buffer: PBS with 0.05% proclin300, 0.05% BSA, 50% glycerol, pH7.3.

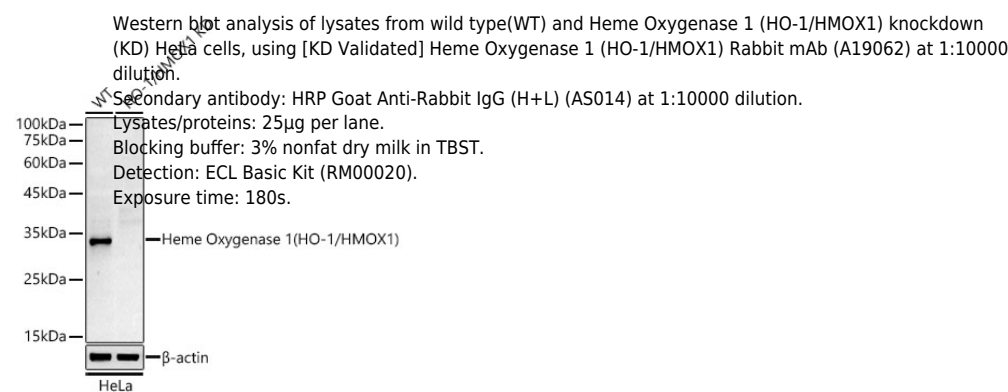
Validation Data



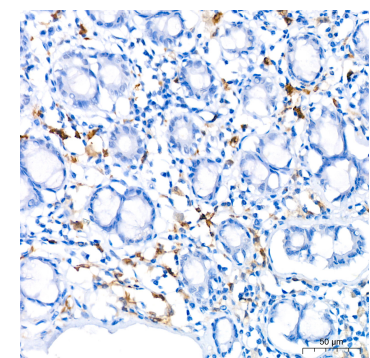
Western blot analysis of lysates from Raw264.7 cells, using [KD Validated] Heme Oxygenase 1 (HO-1/HMOX1) Rabbit mAb (A19062) at 1:10000 dilution.  
Secondary antibody: HRP Goat Anti-Rabbit IgG (H+L) (AS014) at 1:10000 dilution.  
Lysates/proteins: 25µg per lane.  
Blocking buffer: 3% nonfat dry milk in TBST.  
Detection: ECL Basic Kit (RM00020).  
Exposure time: 3s.



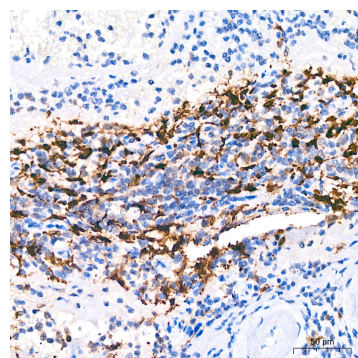
Western blot analysis of lysates from HepG2 cells, using [KD Validated] Heme Oxygenase 1 (HO-1/HMOX1) Rabbit mAb (A19062) at 1:10000 dilution.  
Secondary antibody: HRP Goat Anti-Rabbit IgG (H+L) (AS014) at 1:10000 dilution.  
Lysates/proteins: 25µg per lane.  
Blocking buffer: 3% nonfat dry milk in TBST.  
Detection: ECL Basic Kit (RM00020).  
Exposure time: 180s.



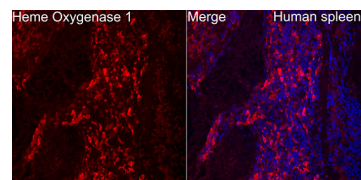
Western blot analysis of lysates from wild type(WT) and Heme Oxygenase 1 (HO-1/HMOX1) knockdown (KD) HeLa cells, using [KD Validated] Heme Oxygenase 1 (HO-1/HMOX1) Rabbit mAb (A19062) at 1:10000 dilution.  
Secondary antibody: HRP Goat Anti-Rabbit IgG (H+L) (AS014) at 1:10000 dilution.  
Lysates/proteins: 25µg per lane.  
Blocking buffer: 3% nonfat dry milk in TBST.  
Detection: ECL Basic Kit (RM00020).  
Exposure time: 180s.



Immunohistochemistry analysis of paraffin-embedded human colon using [KD]



Immunohistochemistry analysis of paraffin-embedded human spleen using [KD]



Immunofluorescence analysis of paraffin-embedded human spleen using [KD]

Validation Data

Validated] Heme Oxygenase 1 (HO-1/HMOX1) Rabbit mAb (A19062) at dilution of 1:200 (40x lens).Perform high pressure antigen retrieval with 10 mM citrate buffer pH 6.0 before commencing with IHC staining protocol.

Validated] Heme Oxygenase 1 (HO-1/HMOX1) Rabbit mAb (A19062) at dilution of 1:200 (40x lens).Perform high pressure antigen retrieval with 10 mM citrate buffer pH 6.0 before commencing with IHC staining protocol.

Validated] Heme Oxygenase 1 (HO-1/HMOX1) Rabbit mAb (A19062) at dilution of 1:50 (40x lens). Secondary antibody: Cy3 Goat Anti-Rabbit IgG (H+L) (AS007) at 1:500 dilution. Blue: DAPI for nuclear staining.