

A19039

Leader in Biomolecular Solutions for Life Science



Cytokeratin 14 (KRT14) Rabbit mAb

Catalog No.: A19039 **Recombinant** **6 Publications**

Basic Information

Observed MW

53kDa

Calculated MW

52kDa

Category

SMab Recombinant Monoclonal Antibody

Applications

WB,IHC-P,ELISA

Cross-Reactivity

Human,Mouse,Rat

CloneNo number

ARC0351

Background

This gene encodes a member of the keratin family, the most diverse group of intermediate filaments. This gene product, a type I keratin, is usually found as a heterotetramer with two keratin 5 molecules, a type II keratin. Together they form the cytoskeleton of epithelial cells. Mutations in the genes for these keratins are associated with epidermolysis bullosa simplex. At least one pseudogene has been identified at 17p12-p11.

Recommended Dilutions

WB	1:500 - 1:2000
IHC-P	1:50 - 1:200

Immunogen Information

Gene ID	Swiss Prot
3861	P02533

Immunogen

Recombinant fusion protein containing a sequence corresponding to amino acids 264-457 of human Cytokeratin 14 (KRT14) (P02533).

Synonyms

K14; NFJ; CK14; EBS1; EBS3; EBS4; EBS1A; EBS1B; EBS1C; EBS1D; Cytokeratin 14 (KRT14)

Contact



www.abclonal.com

Product Information

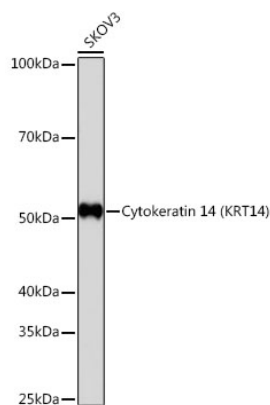
Source	Isotype	Purification
Rabbit	IgG	Affinity purification

Storage

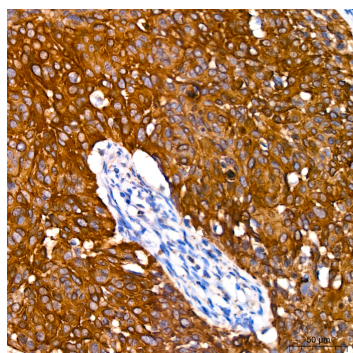
Store at -20°C. Avoid freeze / thaw cycles.

Buffer: PBS with 0.02% sodium azide,0.05% BSA,50% glycerol,pH7.3.

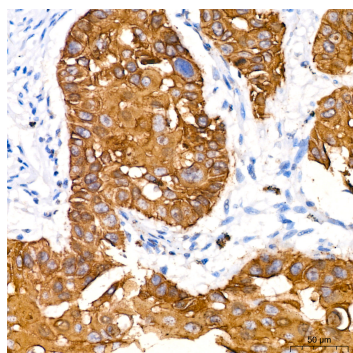
Validation Data



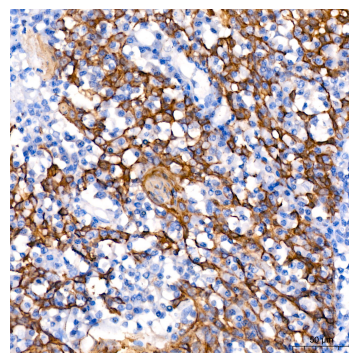
Western blot analysis of lysates from SK-OV-3 cells, using Cytokeratin 14 (KRT14) Rabbit mAb (A19039) at 1:1000 dilution.
 Secondary antibody: HRP Goat Anti-Rabbit IgG (H+L) (AS014) at 1:10000 dilution.
 Lysates/proteins: 25µg per lane.
 Blocking buffer: 3% nonfat dry milk in TBST.
 Detection: ECL Basic Kit (RM00020).
 Exposure time: 3min.



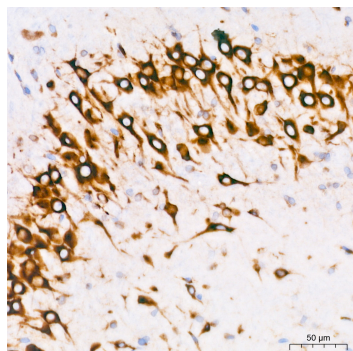
Immunohistochemistry analysis of Cytokeratin 14 (KRT14) in paraffin-embedded Human cervical squamous cell carcinoma using Cytokeratin 14 (KRT14) Rabbit mAb (A19039) at dilution of 1:200 (40x lens). Perform high pressure antigen retrieval with 10 mM citrate buffer pH 6.0 before commencing with IHC staining protocol.



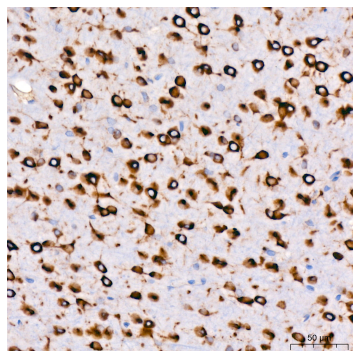
Immunohistochemistry analysis of Cytokeratin 14 (KRT14) in paraffin-embedded human lung squamous carcinoma tissue using Cytokeratin 14 (KRT14) Rabbit mAb (A19039) at dilution of 1:200 (40x lens). Perform high pressure antigen retrieval with 10 mM citrate buffer pH 6.0 before commencing with IHC staining protocol.



Immunohistochemistry analysis of Cytokeratin 14 (KRT14) in paraffin-embedded human tonsil using Cytokeratin 14 (KRT14) Rabbit mAb (A19039) at dilution of 1:200 (40x lens). Perform high pressure antigen retrieval with 10 mM citrate buffer pH 6.0 before commencing with IHC staining protocol.



Immunohistochemistry analysis of Cytokeratin 14 (KRT14) in paraffin-embedded rat brain using Cytokeratin 14 (KRT14) Rabbit mAb (A19039) at dilution of 1:200 (40x lens). Perform high pressure antigen retrieval with 10 mM citrate buffer pH 6.0 before commencing with IHC staining protocol.



Immunohistochemistry analysis of Cytokeratin 14 (KRT14) in paraffin-embedded rat brain using Cytokeratin 14 (KRT14) Rabbit mAb (A19039) at dilution of 1:200 (40x lens). Perform high pressure antigen retrieval with 10 mM citrate buffer pH 6.0 before commencing with IHC staining protocol.