

A19017

Leader in Biomolecular Solutions for Life Science



CD3E Rabbit mAb

Catalog No.: A19017 **Recombinant** **5 Publications**

Basic Information

Observed MW

23kDa

Calculated MW

23kDa

Category

SMab Recombinant Monoclonal Antibody

Applications

WB,IHC-P,ELISA

Cross-Reactivity

Human,Mouse,Rat

CloneNo number

ARC51750

Background

The protein encoded by this gene is the CD3-epsilon polypeptide, which together with CD3-gamma, -delta and -zeta, and the T-cell receptor alpha/beta and gamma/delta heterodimers, forms the T-cell receptor-CD3 complex. This complex plays an important role in coupling antigen recognition to several intracellular signal-transduction pathways. The genes encoding the epsilon, gamma and delta polypeptides are located in the same cluster on chromosome 11. The epsilon polypeptide plays an essential role in T-cell development. Defects in this gene cause immunodeficiency. This gene has also been linked to a susceptibility to type I diabetes in women.

Recommended Dilutions

WB	1:500 - 1:1000
IHC-P	1:1000 - 1:5000

Immunogen Information

Gene ID	Swiss Prot
916	P07766

Immunogen

A synthetic peptide corresponding to a sequence within amino acids 50-150 of human CD3E (NP_000724.1).

Synonyms

T3E; TCRE; IMD18; CD3epsilon; CD3E

Contact



www.abclonal.com

Product Information

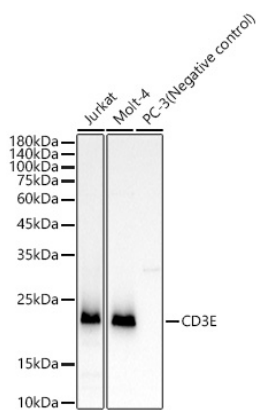
Source	Isotype	Purification
Rabbit	IgG	Affinity purification

Storage

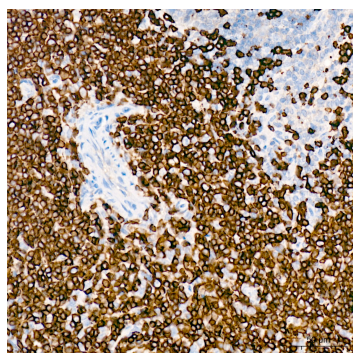
Store at -20°C. Avoid freeze / thaw cycles.

Buffer: PBS with 0.05% proclin300,0.05% BSA,50% glycerol,pH7.3.

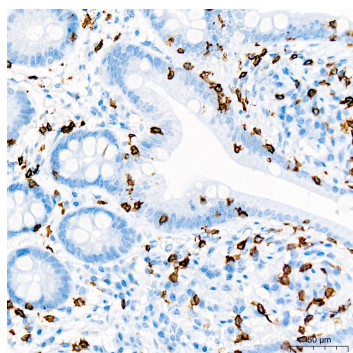
Validation Data



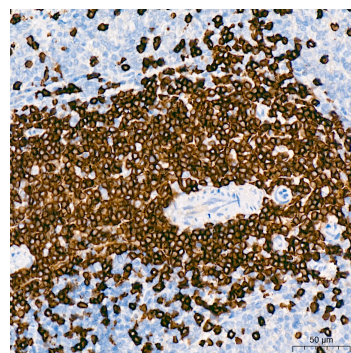
Western blot analysis of various lysates, using CD3E Rabbit pAb (A19017) at 1:1000 dilution. Secondary antibody: HRP Goat Anti-Rabbit IgG (H+L) (AS014) at 1:10000 dilution. Lysates/proteins: 25µg per lane. Blocking buffer: 3% nonfat dry milk in TBST. Detection: ECL Basic Kit (RM00020). Exposure time: 3s.



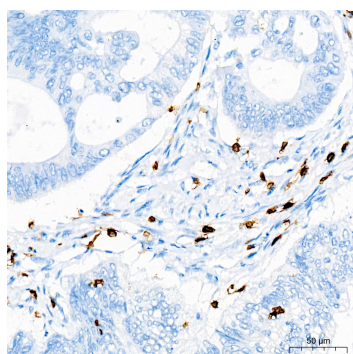
Immunohistochemistry analysis of CD3E in paraffin-embedded mouse spleen tissue using CD3E Rabbit mAb (A19017) at a dilution of 1:2000 (40x lens). High pressure antigen retrieval was performed with 0.01 M citrate buffer (pH 6.0) prior to IHC staining.



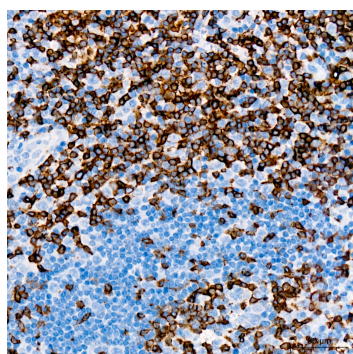
Immunohistochemistry analysis of CD3E in paraffin-embedded human small intestine tissue using CD3E Rabbit mAb (A19017) at a dilution of 1:2000 (40x lens). High pressure antigen retrieval was performed with 0.01 M citrate buffer (pH 6.0) prior to IHC staining.



Immunohistochemistry analysis of CD3E in paraffin-embedded rat spleen tissue using CD3E Rabbit mAb (A19017) at a dilution of 1:2000 (40x lens). High pressure antigen retrieval was performed with 0.01 M citrate buffer (pH 6.0) prior to IHC staining.



Immunohistochemistry analysis of CD3E in paraffin-embedded human colon carcinoma tissue using CD3E Rabbit mAb (A19017) at a dilution of 1:2000 (40x lens). High pressure antigen retrieval was performed with 0.01 M citrate buffer (pH 6.0) prior to IHC staining.



Immunohistochemistry analysis of CD3E in paraffin-embedded human tonsil tissue using CD3E Rabbit mAb (A19017) at a dilution of 1:2000 (40x lens). High pressure antigen retrieval was performed with 0.01 M citrate buffer (pH 6.0) prior to IHC staining.