

# CD18 Rabbit mAb

Catalog No.: A19012 **Recombinant**

## Basic Information

### Observed MW

100kDa

### Calculated MW

85kDa

### Category

Primary antibody

### Applications

ELISA, WB

### Cross-Reactivity

Human

### CloneNo number

ARC0400

## Background

This gene encodes an integrin beta chain, which combines with multiple different alpha chains to form different integrin heterodimers. Integrins are integral cell-surface proteins that participate in cell adhesion as well as cell-surface mediated signalling. The encoded protein plays an important role in immune response and defects in this gene cause leukocyte adhesion deficiency. Alternative splicing results in multiple transcript variants.

## Recommended Dilutions

**WB** 1:500 - 1:2000

## Immunogen Information

### Gene ID

3689

### Swiss Prot

P05107

### Immunogen

A synthetic peptide corresponding to a sequence within amino acids 50-150 of human CD18 (P05107).

### Synonyms

LAD; CD18; MF17; MFI7; LCAMB; LFA-1; MAC-1

## Contact

 | [www.abclonal.com](http://www.abclonal.com)

## Product Information

### Source

Rabbit

### Isotype

IgG

### Purification

Affinity purification

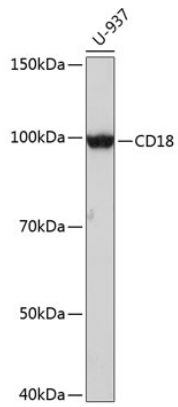
### Storage

Store at -20°C. Avoid freeze / thaw cycles.

Buffer: PBS with 0.02% sodium azide, 0.05% BSA, 50% glycerol, pH7.3.

## Validation Data

---



Western blot analysis of extracts of U-937 cells, using CD18 antibody (A19012) at 1:1000 dilution.  
Secondary antibody: HRP Goat Anti-Rabbit IgG (H+L) (AS014) at 1:10000 dilution.  
Lysates/proteins: 25µg per lane.  
Blocking buffer: 3% nonfat dry milk in TBST.  
Detection: ECL Enhanced Kit (RM00021).  
Exposure time: 3min.