

CD11b/ITGAM Rabbit mAb

Catalog No.: A19010 **Recombinant**

Basic Information

Catalog No.

A19010

Observed MW

170kDa

Calculated MW

170kDa

Category

Primary antibody

Applications

WB, IHC

Cross-Reactivity

Human

Recommended Dilutions

| | |
|------------|----------------|
| WB | 1:500 - 1:2000 |
| IHC | 1:50 - 1:200 |

Contact

 | www.abclonal.com

Background

This gene encodes the integrin alpha M chain. Integrins are heterodimeric integral membrane proteins composed of an alpha chain and a beta chain. This I-domain containing alpha integrin combines with the beta 2 chain (ITGB2) to form a leukocyte-specific integrin referred to as macrophage receptor 1 ('Mac-1'), or inactivated-C3b (iC3b) receptor 3 ('CR3'). The alpha M beta 2 integrin is important in the adherence of neutrophils and monocytes to stimulated endothelium, and also in the phagocytosis of complement coated particles. Multiple transcript variants encoding different isoforms have been found for this gene. [provided by RefSeq, Mar 2009]

Immunogen Information

| | |
|----------------|-------------------|
| Gene ID | Swiss Prot |
| 3684 | P11215 |

Immunogen

A synthesized peptide derived from human CD11b/ITGAM

Synonyms

CD11B;CR3A;MAC-1;MAC1A;MO1A;SLEB6;ITGAM;CD11b/ITAM

Product Information

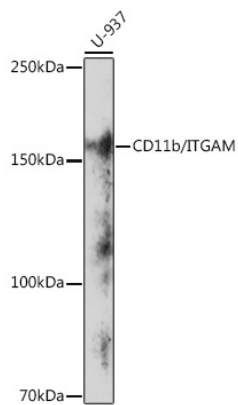
| | | |
|---------------|----------------|-----------------------|
| Source | Isotype | Purification |
| Rabbit | IgG | Affinity purification |

Storage

Store at -20°C. Avoid freeze / thaw cycles.

Buffer: PBS with 0.02% sodium azide,0.05% BSA,50% glycerol,pH7.3.

Validation Data



Western blot analysis of extracts of U-937 cells, using CD11b/ITGAM antibody (A19010) at 1:1000 dilution.

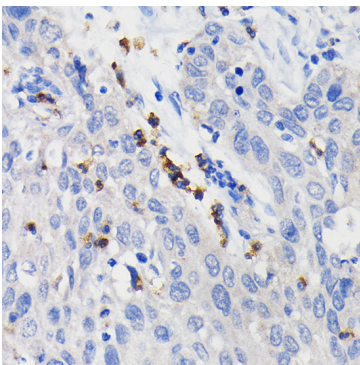
Secondary antibody: HRP Goat Anti-Rabbit IgG (H+L) (AS014) at 1:10000 dilution.

Lysates/proteins: 25ug per lane.

Blocking buffer: 3% nonfat dry milk in TBST.

Detection: ECL Enhanced Kit (RM00021).

Exposure time: 3min.



Immunohistochemistry of paraffin-embedded human lung cancer using CD11b/ITGAM Rabbit mAb (A19010) at dilution of 1:100 (40x lens).