

A18525

Leader in Biomolecular Solutions for Life Science



# ADORA1 Rabbit pAb

Catalog No.: A18525

## Basic Information

---

### Observed MW

37kDa

### Calculated MW

37kDa

### Category

Polyclonal Antibody

### Applications

WB,IHC-P,ELISA

### Cross-Reactivity

Human,Mouse,Rat

## Background

---

The protein encoded by this gene is an adenosine receptor that belongs to the G-protein coupled receptor 1 family. There are 3 types of adenosine receptors, each with a specific pattern of ligand binding and tissue distribution, and together they regulate a diverse set of physiologic functions. The type A1 receptors inhibit adenylyl cyclase, and play a role in the fertilization process. Animal studies also suggest a role for A1 receptors in kidney function and ethanol intoxication. Transcript variants with alternative splicing in the 5' UTR have been found for this gene.

## Recommended Dilutions

---

WB 1:500 - 1:2000

IHC-P 1:50 - 1:200

## Immunogen Information

---

### Gene ID

134

### Swiss Prot

P30542

### Immunogen

A synthetic peptide corresponding to a sequence within amino acids 250-326 of human ADORA1 (NP\_000665.1).

### Synonyms

RDC7; ADORA1

## Contact

---

 [www.abclonal.com](http://www.abclonal.com)

## Product Information

---

### Source

Rabbit

### Isotype

IgG

### Purification

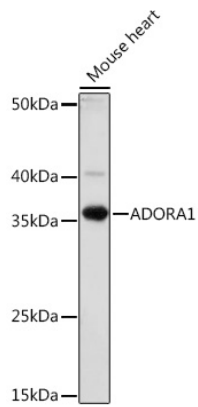
Affinity purification

### Storage

Store at -20°C. Avoid freeze / thaw cycles.

Buffer: PBS with 0.01% thimerosal, 50% glycerol, pH7.3.

## Validation Data



Western blot analysis of lysates from Mouse heart, using ADORA1 Rabbit pAb (A18525) at 1:1000 dilution.

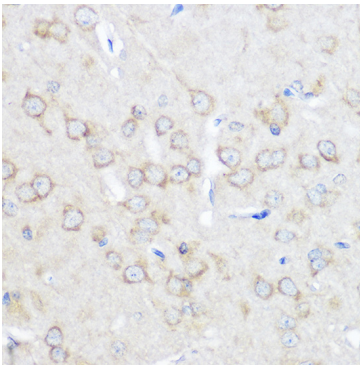
Secondary antibody: HRP Goat Anti-Rabbit IgG (H+L) (AS014) at 1:10000 dilution.

Lysates/proteins: 25µg per lane.

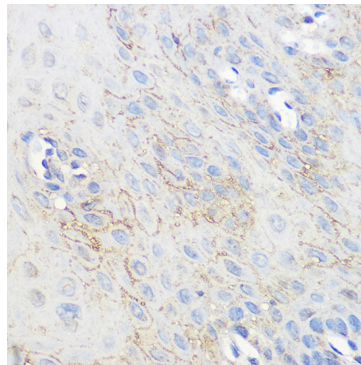
Blocking buffer: 3% nonfat dry milk in TBST.

Detection: ECL Basic Kit (RM00020).

Exposure time: 1min.



Immunohistochemistry analysis of paraffin-embedded rat brain using ADORA1 Rabbit pAb (A18525) at dilution of 1:100 (40x lens). Perform microwave antigen retrieval with 10 mM PBS buffer pH 7.2 before commencing with IHC staining protocol.



Immunohistochemistry analysis of paraffin-embedded human esophageal using ADORA1 Rabbit pAb (A18525) at dilution of 1:100 (40x lens). Perform microwave antigen retrieval with 10 mM PBS buffer pH 7.2 before commencing with IHC staining protocol.