

# TET3 Rabbit pAb

Catalog No.: A18319

## Basic Information

---

### Catalog No.

A18319

### Observed MW

179kDa

### Calculated MW

77kDa/166kDa/179kDa

### Category

Primary antibody

### Applications

WB, IF

### Cross-Reactivity

Human, Mouse

## Recommended Dilutions

---

**WB** 1:500 - 1:2000

**IF** 1:50 - 1:200

## Background

---

Members of the ten-eleven translocation (TET) gene family, including TET3, play a role in the DNA methylation process (Langemeijer et al., 2009 [PubMed 19923888]).[supplied by OMIM, Nov 2010]

## Immunogen Information

---

### Gene ID

200424

### Swiss Prot

O43151

### Immunogen

Recombinant protein of human TET3.

### Synonyms

TET3;hCG\_40738;TET3

## Contact

---

 | [www.abclonal.com](http://www.abclonal.com)

## Product Information

---

### Source

Rabbit

### Isotype

IgG

### Purification

Affinity purification

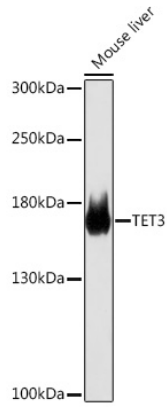
### Storage

Store at -20°C. Avoid freeze / thaw cycles.

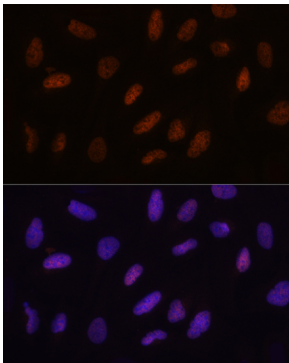
Buffer: PBS with 0.02% sodium azide,50% glycerol,pH7.3.

## Validation Data

---



Western blot analysis of extracts of Mouse liver, using TET3 Rabbit pAb (A18319) at 1:1000 dilution.  
Secondary antibody: HRP Goat Anti-Rabbit IgG (H+L) (AS014) at 1:10000 dilution.  
Lysates/proteins: 25ug per lane.  
Blocking buffer: 3% nonfat dry milk in TBST.  
Detection: ECL Basic Kit (RM00020).  
Exposure time: 1s.



Immunofluorescence analysis of U2OS cells using TET3 Rabbit pAb (A18319) at dilution of 1:100. Blue: DAPI for nuclear staining.