

A18296

Leader in Biomolecular Solutions for Life Science



Pan DiMethyl-lysine Rabbit pAb

Catalog No.: A18296 **1 Publications**

Basic Information

Observed MW

17-48kDa

Calculated MW

Category

Polyclonal Antibody

Applications

WB,ELISA

Cross-Reactivity

Human,Mouse,Rat

Background

The lysine methylation chemical reaction is the reversible addition of one, two or three methyl groups to the ϵ -nitrogen of a lysine side chain, forming monomethylated, dimethylated and trimethylated derivatives (referred to here as 'Kme1' , 'Kme2' and 'Kme3').

Recommended Dilutions

WB 1:500 - 1:2000

Immunogen Information

Gene ID

Swiss Prot

Immunogen

A synthetic peptide corresponding to a sequence containing dimethylated K.

Synonyms

Contact

 www.abclonal.com

Product Information

Source

Rabbit

Isotype

IgG

Purification

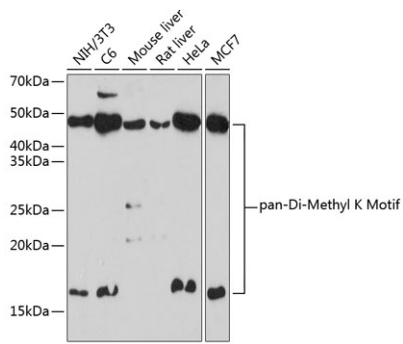
Affinity purification

Storage

Store at -20°C. Avoid freeze / thaw cycles.

Buffer: PBS with 0.01% thimerosal,50% glycerol,pH7.3.

Validation Data



Western blot analysis of various lysates using Pan DiMethyl-lysine Rabbit pAb (A18296) at 1:1000 dilution.

Secondary antibody: HRP Goat Anti-Rabbit IgG (H+L) (AS014) at 1:10000 dilution.

Lysates/proteins: 25µg per lane.

Blocking buffer: 3% nonfat dry milk in TBST.

Detection: ECL Basic Kit (RM00020).

Exposure time: 3min.