

# PHLPP2 Rabbit pAb

Catalog No.: A18218

## Basic Information

---

**Catalog No.**

A18218

**Observed MW**

140kDa

**Calculated MW**

147kDa

**Category**

Primary antibody

**Applications**

WB,IF

**Cross-Reactivity**

Human, Mouse, Rat

## Recommended Dilutions

---

**WB** 1:500 - 1:2000

**IF** 1:50 - 1:200

## Background

---

## Immunogen Information

---

**Gene ID**

23035

**Swiss Prot**

Q6ZVD8

**Immunogen**

Recombinant protein of human PHLPP2.

**Synonyms**

PHLPP2;PHLPPL;PPM3B

## Contact

---

 | [www.abclonal.com](http://www.abclonal.com)

## Product Information

---

**Source**

Rabbit

**Isotype**

IgG

**Purification**

Affinity purification

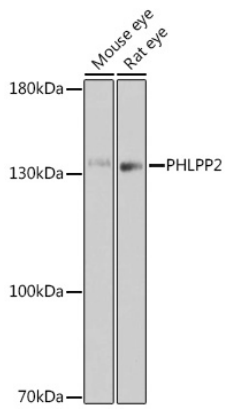
**Storage**

Store at -20°C. Avoid freeze / thaw cycles.

Buffer: PBS with 0.02% sodium azide,50% glycerol,pH7.3.

## Validation Data

---



Western blot analysis of extracts of various cell lines, using PHLPP2 antibody (A18218) at 1:1000 dilution.

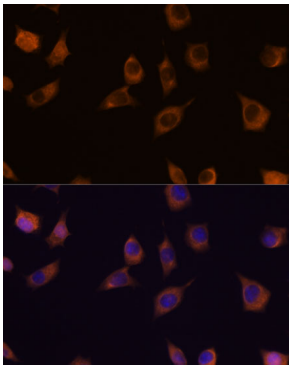
Secondary antibody: HRP Goat Anti-Rabbit IgG (H+L) (AS014) at 1:10000 dilution.

Lysates/proteins: 25ug per lane.

Blocking buffer: 3% nonfat dry milk in TBST.

Detection: ECL Basic Kit (RM00020).

Exposure time: 180s.



Immunofluorescence analysis of L929 cells using PHLPP2 antibody (A18218) at dilution of 1:100. Blue: DAPI for nuclear staining.