

KEAP1 Rabbit pAb

Catalog No.: A1820 **5 Publications**

Basic Information

Catalog No.

A1820

Observed MW

60kDa

Calculated MW

69kDa

Category

Primary antibody

Applications

WB, IHC, IF

Cross-Reactivity

Human, Mouse, Rat

Recommended Dilutions

WB	1:500 - 1:2000
IHC	1:50 - 1:200
IF	1:50 - 1:200

Contact

 | www.abclonal.com

Background

This gene encodes a protein containing KELCH-1 like domains, as well as a BTB/POZ domain. Kelch-like ECH-associated protein 1 interacts with NF-E2-related factor 2 in a redox-sensitive manner and the dissociation of the proteins in the cytoplasm is followed by transportation of NF-E2-related factor 2 to the nucleus. This interaction results in the expression of the catalytic subunit of gamma-glutamylcysteine synthetase. Two alternatively spliced transcript variants encoding the same isoform have been found for this gene.

Immunogen Information

Gene ID	Swiss Prot
9817	Q14145

Immunogen

Recombinant fusion protein containing a sequence corresponding to amino acids 325-624 of human KEAP1 (NP_036421.2).

Synonyms

KEAP1;INrf2;KLHL19

Product Information

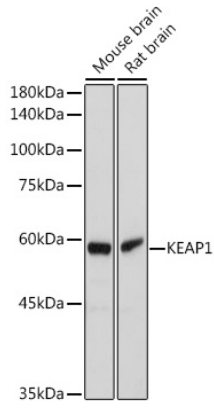
Source	Isotype	Purification
Rabbit	IgG	Affinity purification

Storage

Store at -20°C. Avoid freeze / thaw cycles.

Buffer: PBS with 0.02% sodium azide, 50% glycerol, pH7.3.

Validation Data



Western blot analysis of extracts of various cell lines, using KEAP1 antibody (A1820) at 1:1000 dilution.

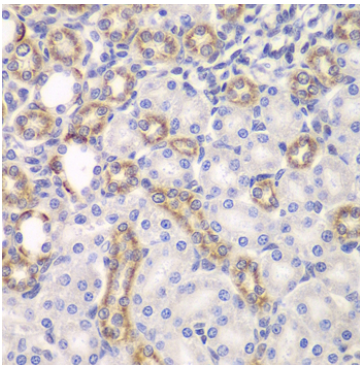
Secondary antibody: HRP Goat Anti-Rabbit IgG (H+L) (AS014) at 1:10000 dilution.

Lysates/proteins: 25ug per lane.

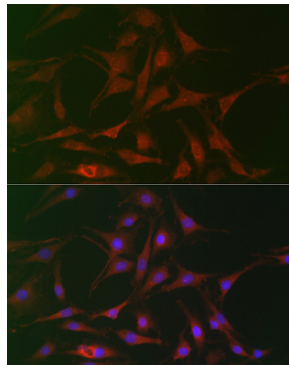
Blocking buffer: 3% nonfat dry milk in TBST.

Detection: ECL Basic Kit (RM00020).

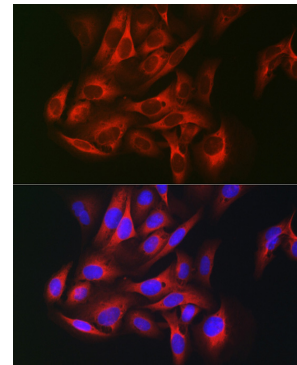
Exposure time: 10s.



Immunohistochemistry of paraffin-embedded rat kidney using KEAP1 antibody (A1820) at dilution of 1:100 (40x lens).



Immunofluorescence analysis of C6 cells using KEAP1 Rabbit pAb (A1820) at dilution of 1:100 (40x lens). Blue: DAPI for nuclear staining.



Immunofluorescence analysis of U-2 OS cells using KEAP1 Rabbit pAb (A1820) at dilution of 1:100 (40x lens). Blue: DAPI for nuclear staining.