

A18198

Leader in Biomolecular Solutions for Life Science



K29-linkage Specific Polyubiquitin Rabbit pAb

Catalog No.: A18198

Basic Information

Observed MW

Calculated MW

Category

Mouse Monoclonal Antibody

Applications

WB, ELISA, DB

Cross-Reactivity

Human, Mouse, Rat, Other (Wide Range Predicted)

Background

Polyubiquitin chains regulate diverse cellular processes through the ability of ubiquitin to form chains of eight different linkage types. When attached to a target protein, have different functions depending on the Lys residue of the ubiquitin that is linked. K29-linked ubiquitination is involved in different kinds of cellular proteotoxic stress response as well as cell cycle regulation. In particular, K29-linked ubiquitination is enriched in the midbody and downregulation of the K29-linked ubiquitination signal arrests cells in G1/S phase.

Recommended Dilutions

DB 1:500 - 1:1000

WB 1:500 - 1:2000

Immunogen Information

Gene ID

Swiss Prot

Immunogen

A synthetic peptide corresponding to a sequence containing polyubiquitinated protein (K29 linkage).

Synonyms

Contact



www.abclonal.com

Product Information

Source

Rabbit

Isotype

IgG

Purification

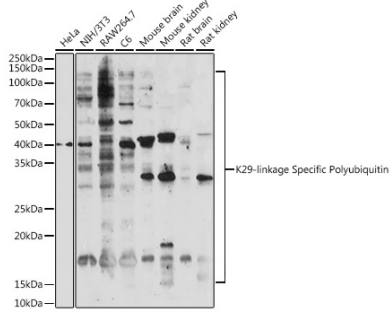
Affinity purification

Storage

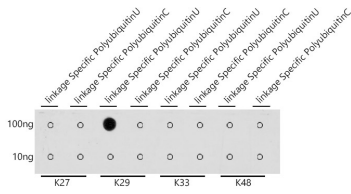
Store at -20°C. Avoid freeze / thaw cycles.

Buffer: PBS with 0.01% thimerosal, 50% glycerol, pH 7.3.

Validation Data



Western blot analysis of various lysates using K29-linkage Specific Polyubiquitin Rabbit pAb (A18198) at 1:500 dilution.
 Secondary antibody: HRP Goat Anti-Rabbit IgG (H+L) (AS014) at 1:10000 dilution.
 Lysates/proteins: 25µg per lane.
 Blocking buffer: 3% nonfat dry milk in TBST.
 Detection: ECL Enhanced Kit (RM00021).
 Exposure time: 90s.



Dot-blot analysis of all sorts of peptides using K29-linkage Specific Polyubiquitin antibody (A18198) at 1:1000 dilution.