

A18106

Leader in Biomolecular Solutions for Life Science



K6-linkage Specific Polyubiquitin Rabbit pAb

Catalog No.: A18106

Basic Information

Observed MW

Calculated MW

Category

Polyclonal Antibody

Applications

WB,ELISA,DB

Cross-Reactivity

Mouse,Rat

Background

Polyubiquitin chains regulate diverse cellular processes through the ability of ubiquitin to form chains of eight different linkage types. Polyubiquitin chains, when attached to a target protein, have different functions depending on the Lys residue of the ubiquitin that is linked: Lys-6-linked may be involved in DNA repair. It has been reported that modification at Lys-6 inhibits ubiquitin-dependent protein degradation, a failure of the ubiquitin-proteasome system could play a role in initiating the formation of degradation-resistant PHF tangles.

Recommended Dilutions

WB 1:500 - 1:2000

DB 1:500 - 1:1000

Immunogen Information

Gene ID

Swiss Prot

Immunogen

A synthetic peptide corresponding to a sequence containing polyubiquitinated protein (K6 linkage).

Synonyms

Contact



www.abclonal.com

Product Information

Source

Rabbit

Isotype

IgG

Purification

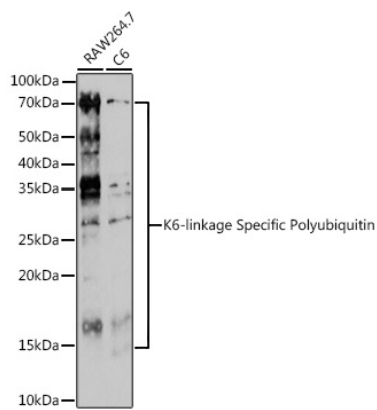
Affinity purification

Storage

Store at -20°C. Avoid freeze / thaw cycles.

Buffer: PBS with 0.01% thimerosal, 50% glycerol, pH 7.3.

Validation Data



Western blot analysis of various lysates using K6-linkage Specific Polyubiquitin Rabbit pAb (A18106) at 1:500 dilution.

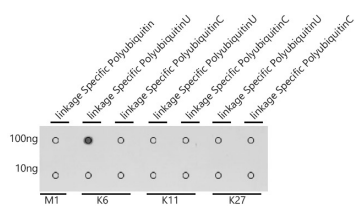
Secondary antibody: HRP Goat Anti-Rabbit IgG (H+L) (AS014) at 1:10000 dilution.

Lysates/proteins: 25µg per lane.

Blocking buffer: 3% nonfat dry milk in TBST.

Detection: ECL Enhanced Kit (RM00021).

Exposure time: 180s.



Dot-blot analysis of all sorts of peptides using K6-linkage Specific Polyubiquitin antibody (A18106) at 1:1000 dilution.