

A18075

Leader in Biomolecular Solutions for Life Science



## [KO Validated] UBE2C Rabbit pAb

Catalog No.: A18075 **KO Validated** **1 Publications**

### Basic Information

#### Observed MW

18kDa

#### Calculated MW

20kDa

#### Category

Polyclonal Antibody

#### Applications

WB,IF/ICC,ELISA

#### Cross-Reactivity

Human

### Background

The modification of proteins with ubiquitin is an important cellular mechanism for targeting abnormal or short-lived proteins for degradation. Ubiquitination involves at least three classes of enzymes: ubiquitin-activating enzymes, ubiquitin-conjugating enzymes, and ubiquitin-protein ligases. This gene encodes a member of the E2 ubiquitin-conjugating enzyme family. The encoded protein is required for the destruction of mitotic cyclins and for cell cycle progression, and may be involved in cancer progression. Multiple transcript variants encoding different isoforms have been found for this gene. Pseudogenes of this gene have been defined on chromosomes 4, 14, 15, 18, and 19.

### Recommended Dilutions

WB 1:500 - 1:2000

IF/ICC 1:50 - 1:100

### Immunogen Information

#### Gene ID

11065

#### Swiss Prot

O00762

#### Immunogen

Recombinant fusion protein containing a sequence corresponding to amino acids 1-179 of human UBE2C (NP\_008950.1).

#### Synonyms

UBCH10; dj447F3.2; 2C

### Contact



[www.abclonal.com](http://www.abclonal.com)

### Product Information

#### Source

Rabbit

#### Isotype

IgG

#### Purification

Affinity purification

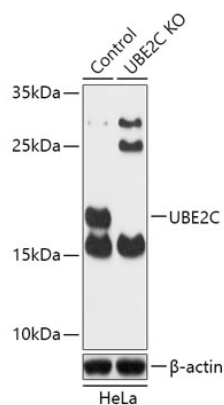
#### Storage

Store at -20°C. Avoid freeze / thaw cycles.

Buffer: PBS with 0.01% thimerosal, 50% glycerol, pH 7.3.

## Validation Data

---



Western blot analysis of lysates from wild type (WT) and UBE2C knockout (KO) HeLa cells, using [KO Validated] UBE2C Rabbit pAb (A18075) at 1:1000 dilution.  
Secondary antibody: HRP Goat Anti-Rabbit IgG (H+L) (AS014) at 1:10000 dilution.  
Lysates/proteins: 25µg per lane.  
Blocking buffer: 3% nonfat dry milk in TBST.  
Detection: ECL Basic Kit (RM00020).  
Exposure time: 90s.