

[KO Validated] APP Rabbit mAb

Catalog No.: A17911 **KO Validated** **Recombinant** **2 Publications**

Basic Information

Catalog No.

A17911

Observed MW

100-140kDa

Calculated MW

86kDa

Category

Primary antibody

Applications

WB, IHC, IF, IP

Cross-Reactivity

Human, Mouse, Rat

Recommended Dilutions

WB	1:500 - 1:2000
IHC	1:50 - 1:200
IF	1:50 - 1:200
IP	1:50 - 1:200

Contact

 | www.abclonal.com

Background

This gene encodes a cell surface receptor and transmembrane precursor protein that is cleaved by secretases to form a number of peptides. Some of these peptides are secreted and can bind to the acetyltransferase complex APBB1/TIP60 to promote transcriptional activation, while others form the protein basis of the amyloid plaques found in the brains of patients with Alzheimer disease. In addition, two of the peptides are antimicrobial peptides, having been shown to have bacteriocidal and antifungal activities. Mutations in this gene have been implicated in autosomal dominant Alzheimer disease and cerebroarterial amyloidosis (cerebral amyloid angiopathy). Multiple transcript variants encoding several different isoforms have been found for this gene. [provided by RefSeq, Aug 2014]

Immunogen Information

Gene ID	Swiss Prot
351	P05067

Immunogen

A synthesized peptide derived from human APP

Synonyms

AAA;ABETA;ABPP;AD1;APPI;CTFgamma;CVAP;PN-II;PN2;Amyloid beta A4;APP;Aβ42;preA4

Product Information

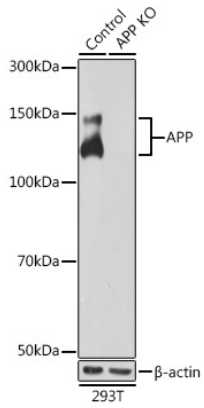
Source	Isotype	Purification
Rabbit	IgG	Affinity purification

Storage

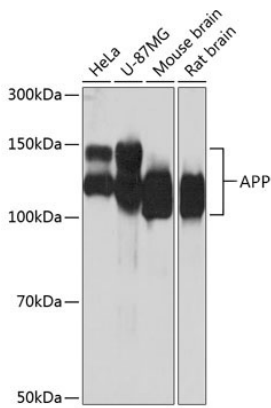
Store at -20°C. Avoid freeze / thaw cycles.

Buffer: PBS with 0.02% sodium azide,0.05% BSA,50% glycerol,pH7.3.

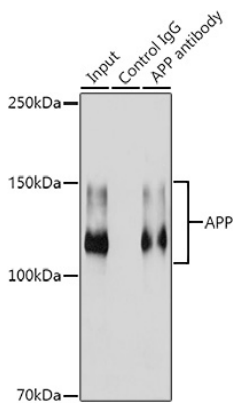
Validation Data



Western blot analysis of extracts from normal (control) and APP knockout (KO) 293T cells, using APP antibody (A17911) at 1:1000 dilution.
Secondary antibody: HRP Goat Anti-Rabbit IgG (H+L) (AS014) at 1:10000 dilution.
Lysates/proteins: 25ug per lane.
Blocking buffer: 3% nonfat dry milk in TBST.
Detection: ECL Basic Kit (RM00020).
Exposure time: 10s.

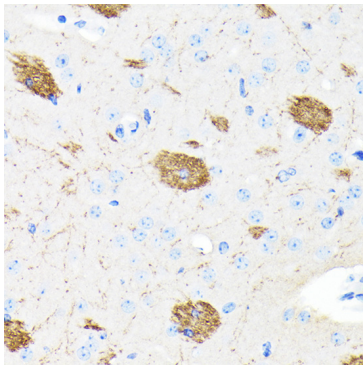


Western blot analysis of extracts of various cell lines, using APP antibody (A17911) at 1:1000 dilution.
Secondary antibody: HRP Goat Anti-Rabbit IgG (H+L) (AS014) at 1:10000 dilution.
Lysates/proteins: 25ug per lane.
Blocking buffer: 3% nonfat dry milk in TBST.
Detection: ECL Basic Kit (RM00020).
Exposure time: 10s.

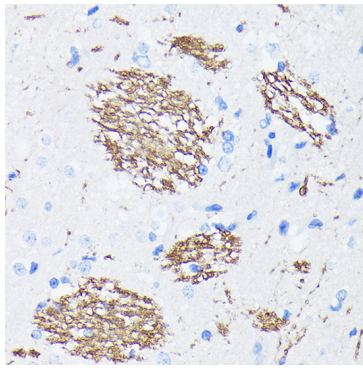


Immunoprecipitation analysis of 300ug extracts of HeLa cells using 3ug APP antibody (A17911).
Western blot was performed from the immunoprecipitate using APP antibody (A17911) at a dilution of 1:1000.

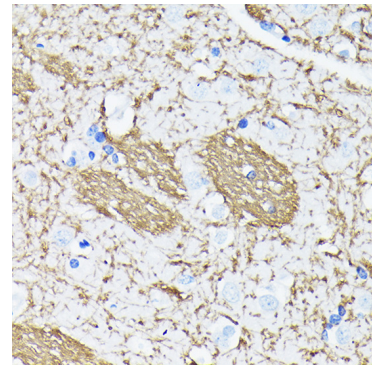
Validation Data



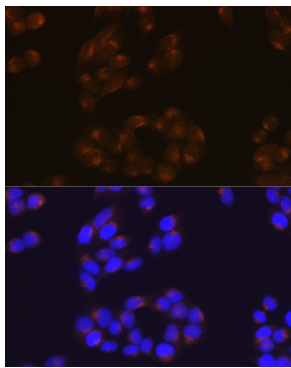
Immunohistochemistry of paraffin-embedded mouse brain using APP Rabbit mAb (A17911) at dilution of 1:100 (40x lens). Perform microwave antigen retrieval with 10 mM PBS buffer pH 7.2 before commencing with IHC staining protocol.



Immunohistochemistry of paraffin-embedded rat brain using APP Rabbit mAb (A17911) at dilution of 1:100 (40x lens). Perform microwave antigen retrieval with 10 mM PBS buffer pH 7.2 before commencing with IHC staining protocol.



Immunohistochemistry of paraffin-embedded human brain using APP Rabbit mAb (A17911) at dilution of 1:100 (40x lens). Perform microwave antigen retrieval with 10 mM PBS buffer pH 7.2 before commencing with IHC staining protocol.



Immunofluorescence analysis of HeLa cells using APP Rabbit mAb (A17911) at dilution of 1:100 (40x lens). Blue: DAPI for nuclear staining.