

A17908

Leader in Biomolecular Solutions for Life Science



## ABCG2 Rabbit mAb

Catalog No.: A17908

Recombinant

2 Publications

### Basic Information

#### Observed MW

72kDa

#### Calculated MW

72kDa

#### Category

SMab Recombinant Monoclonal Antibody

#### Applications

WB,ELISA

#### Cross-Reactivity

Human

#### CloneNo number

ARC0383

### Background

The membrane-associated protein encoded by this gene is included in the superfamily of ATP-binding cassette (ABC) transporters. ABC proteins transport various molecules across extra- and intra-cellular membranes. ABC genes are divided into seven distinct subfamilies (ABC1, MDR/TAP, MRP, ALD, OABP, GCN20, White). This protein is a member of the White subfamily. Alternatively referred to as a breast cancer resistance protein, this protein functions as a xenobiotic transporter which may play a major role in multi-drug resistance. It likely serves as a cellular defense mechanism in response to mitoxantrone and anthracycline exposure. Significant expression of this protein has been observed in the placenta, which may suggest a potential role for this molecule in placenta tissue. Multiple transcript variants encoding different isoforms have been found for this gene.

### Recommended Dilutions

WB 1:500 - 1:2000

### Immunogen Information

#### Gene ID

9429

#### Swiss Prot

Q9UNQ0

#### Immunogen

A synthetic peptide corresponding to a sequence within amino acids 100-200 of human ABCG2 (Q9UNQ0).

#### Synonyms

MRX; MXR; ABCP; BCRP; BMDP; MXR1; ABC15; BCRP1; CD338; GOUT1; MXR-1; CDw338; CDw388; UAQTL1; EST157481; ABCG2

### Contact



[www.abclonal.com](http://www.abclonal.com)

### Product Information

#### Source

Rabbit

#### Isotype

IgG

#### Purification

Affinity purification

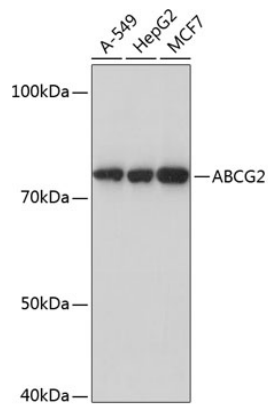
#### Storage

Store at -20°C. Avoid freeze / thaw cycles.

Buffer: PBS with 0.02% sodium azide,0.05% BSA,50% glycerol,pH7.3.

## Validation Data

---



Western blot analysis of extracts of various cell lines, using ABCG2 antibody (A17908) at 1:1000 dilution.  
Secondary antibody: HRP Goat Anti-Rabbit IgG (H+L) (AS014) at 1:10000 dilution.  
Lysates/proteins: 25µg per lane.  
Blocking buffer: 3% nonfat dry milk in TBST.  
Detection: ECL Basic Kit (RM00020).  
Exposure time: 10s.