

A1753

Leader in Biomolecular Solutions for Life Science



CD3E Rabbit pAb

Catalog No.: A1753 **8 Publications**

Basic Information

Observed MW

23kDa

Calculated MW

23kDa

Category

Polyclonal Antibody

Applications

WB,IHC-P,IF/ICC,IP,FC,ELISA

Cross-Reactivity

Human,Mouse,Rat


Background

The protein encoded by this gene is the CD3-epsilon polypeptide, which together with CD3-gamma, -delta and -zeta, and the T-cell receptor alpha/beta and gamma/delta heterodimers, forms the T-cell receptor-CD3 complex. This complex plays an important role in coupling antigen recognition to several intracellular signal-transduction pathways. The genes encoding the epsilon, gamma and delta polypeptides are located in the same cluster on chromosome 11. The epsilon polypeptide plays an essential role in T-cell development. Defects in this gene cause immunodeficiency. This gene has also been linked to a susceptibility to type I diabetes in women.

Recommended Dilutions

WB	1:500 - 1:1000
IHC-P	1:50 - 1:200
IF/ICC	1:50 - 1:200
IP	0.5µg-4µg antibody for 200µg-400µg extracts of whole cells

Contact

 www.abclonal.com

Immunogen Information

Gene ID	Swiss Prot
916	P07766

Immunogen

Recombinant fusion protein containing a sequence corresponding to amino acids 1-126 of human CD3E (NP_000724.1).

Synonyms

T3E; TCRE; IMD18; CD3epsilon; CD3E

Product Information

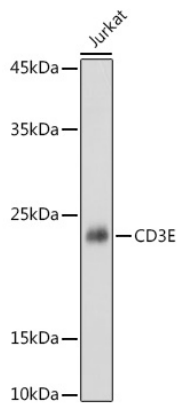
Source	Isotype	Purification
Rabbit	IgG	Affinity purification

Storage

Store at -20°C. Avoid freeze / thaw cycles.

Buffer: PBS with 0.02% sodium azide,50% glycerol,pH7.3.

Validation Data



Western blot analysis of lysates from Jurkat cells, using CD3E Rabbit pAb (A1753) at 1:1000 dilution.

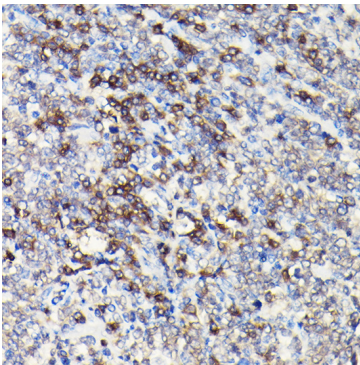
Secondary antibody: HRP Goat Anti-Rabbit IgG (H+L) (AS014) at 1:10000 dilution.

Lysates/proteins: 25µg per lane.

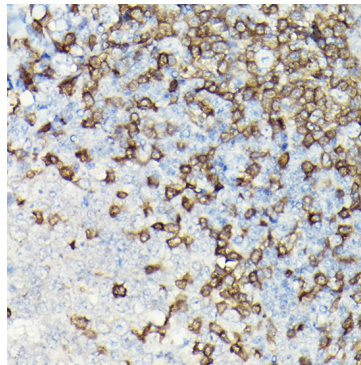
Blocking buffer: 3% nonfat dry milk in TBST.

Detection: ECL Basic Kit (RM00020).

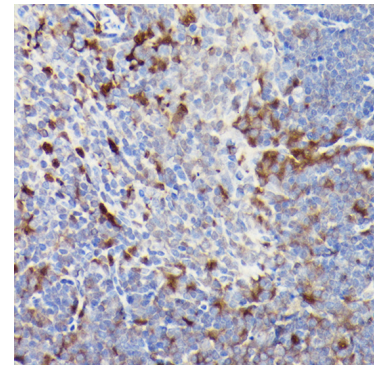
Exposure time: 1s.



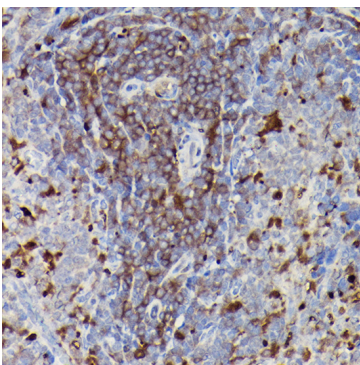
Immunohistochemistry analysis of paraffin-embedded human extranodal NK-T cell lymphoma using CD3E Rabbit pAb (A1753) at dilution of 1:200 (40x lens). Perform high pressure antigen retrieval with 10 mM citrate buffer pH 6.0 before commencing with IHC staining protocol.



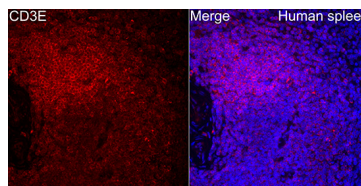
Immunohistochemistry analysis of paraffin-embedded human tonsil using CD3E Rabbit pAb (A1753) at dilution of 1:200 (40x lens). Perform high pressure antigen retrieval with 10 mM citrate buffer pH 6.0 before commencing with IHC staining protocol.



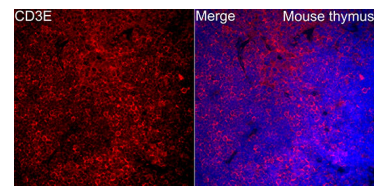
Immunohistochemistry analysis of paraffin-embedded mouse spleen using CD3E Rabbit pAb (A1753) at dilution of 1:200 (40x lens). Perform high pressure antigen retrieval with 10 mM citrate buffer pH 6.0 before commencing with IHC staining protocol.



Immunohistochemistry analysis of paraffin-embedded rat spleen using CD3E Rabbit pAb (A1753) at dilution of 1:200 (40x lens). Perform high pressure antigen retrieval with 10 mM citrate buffer pH 6.0 before commencing with IHC staining protocol.



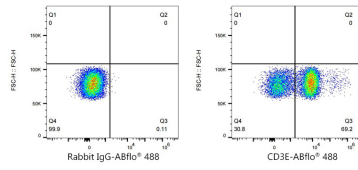
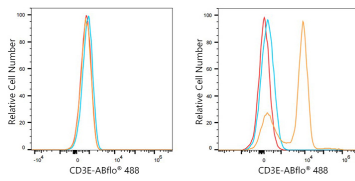
Immunofluorescence analysis of paraffin-embedded Human spleen tissue using CD3E Rabbit pAb (A1753) at a dilution of 1:100 (40x lens). Secondary antibody: Cy3 Goat Anti-Rabbit IgG (H+L) (AS007) at 1:500 dilution. Blue: DAPI for nuclear staining. Perform high pressure antigen retrieval with 0.01 M citrate



Immunofluorescence analysis of paraffin-embedded Mouse thymus tissue using CD3E Rabbit pAb (A1753) at a dilution of 1:100 (40x lens). Secondary antibody: Cy3 Goat Anti-Rabbit IgG (H+L) (AS007) at 1:500 dilution. Blue: DAPI for nuclear staining. Perform high pressure antigen retrieval with 0.01 M citrate

buffer (pH 6.0) prior to IF staining.

buffer (pH 6.0) prior to IF staining.



Flow cytometry: 1×10^6 Raji cells (negative control, left) and Human PBMC (right) were surface-stained with CD3E Rabbit pAb (A1753, 2 µg/mL, orange line) or Rabbit IgG isotype control (AC042, 2 µg/mL, blue line), followed by FITC conjugated goat anti-Rabbit pAb staining. Non-fluorescently stained cells were used as blank control (red line).

Flow cytometry: 1×10^6 Human PBMC were surface-stained with Rabbit IgG isotype control (AC042, 2 µg/mL, left) or CD3E Rabbit pAb (A1753, 2 µg/mL, right), followed by FITC conjugated goat anti-Rabbit pAb staining.