

A17437

Leader in Biomolecular Solutions for Life Science



CA19-9 Mouse mAb

Catalog No.: A17437

Basic Information

Observed MW

Refer to figures

Calculated MW

Category

Mouse Monoclonal Antibody

Applications

IHC-P,IF/ICC,ELISA

Cross-Reactivity

Human

CloneNo number

AMC0043

Background

CA 19-9 (carbohydrate antigen 19-9, also called cancer antigen 19-9 or sialylated Lewis (a) antigen) is a tumor marker that is used primarily in the management of pancreatic cancer. CA 19-9 is an antigen defined by monoclonal antibody binding to CA 19-9, the tumor surface marker Sialyl-Lewis A.

Recommended Dilutions

IHC-P 1:50 - 1:200

IF/ICC 1:50 - 1:200

Immunogen Information

Gene ID Swiss Prot

Immunogen

Human colon carcinoma cell line SW1116

Synonyms

Contact

 www.abclonal.com

Product Information

Source

Mouse

Isotype

IgM,Kappa

Purification

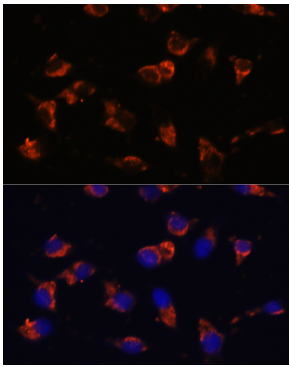
Affinity purification

Storage

Store at -20°C. Avoid freeze / thaw cycles.

Buffer: PBS with 0.01% thimerosal,50% glycerol,pH7.3.

Validation Data



Immunofluorescence analysis of SW480 cells using CA19-9 Mouse mAb (A17437) at dilution of 1:100. Blue: DAPI for nuclear staining.