

A17073

Leader in Biomolecular Solutions for Life Science



# $\beta$ III-Tubulin Rabbit pAb

Catalog No.: A17073

## Basic Information

### Observed MW

55kDa

### Calculated MW

50kDa

### Category

Polyclonal Antibody

### Applications

WB,ELISA

### Cross-Reactivity

Human,Mouse,Rat

## Background

This gene encodes a class III member of the beta tubulin protein family. Beta tubulins are one of two core protein families (alpha and beta tubulins) that heterodimerize and assemble to form microtubules. This protein is primarily expressed in neurons and may be involved in neurogenesis and axon guidance and maintenance. Mutations in this gene are the cause of congenital fibrosis of the extraocular muscles type 3. Alternate splicing results in multiple transcript variants. A pseudogene of this gene is found on chromosome 6.

## Recommended Dilutions

WB 1:500 - 1:2000

## Immunogen Information

### Gene ID

10381

### Swiss Prot

Q13509

### Immunogen

Recombinant fusion protein containing a sequence corresponding to amino acids 40-260 of human  $\beta$ III-Tubulin/ $\beta$ 3-Tubulin (NP\_006077.2).

### Synonyms

CDCBM; FEOM3; TUBB4; CDCBM1; CFEOM3; beta-4; CFEOM3A;  $\beta$ III-Tubulin

## Contact



[www.abclonal.com](http://www.abclonal.com)

## Product Information

### Source

Rabbit

### Isotype

IgG

### Purification

Affinity purification

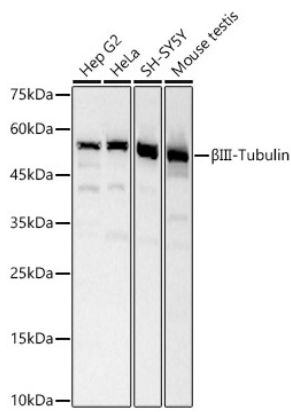
### Storage

Store at -20°C. Avoid freeze / thaw cycles.

Buffer: PBS with 0.05% proclin300,50% glycerol,pH7.3.

## Validation Data

---



Western blot analysis of various lysates, using  $\beta$ III-Tubulin Rabbit pAb (A17073) at 1:400 dilution.  
Secondary antibody: HRP Goat Anti-Rabbit IgG (H+L) (AS014) at 1:10000 dilution.  
Lysates/proteins: 25ug per lane.  
Blocking buffer: 3% nonfat dry milk in TBST.  
Detection: ECL Basic Kit (RM00020).  
Exposure time: 60s.