

# IL18 Rabbit pAb

Catalog No.: A16737 **5 Publications**

## Basic Information

### Catalog No.

A16737

### Observed MW

22KDa

### Calculated MW

21kDa/22kDa

### Category

Primary antibody

### Applications

WB, IF, IP

### Cross-Reactivity

Human, Mouse, Rat

## Recommended Dilutions

<b>WB</b>	1:500 - 1:2000
<b>IF</b>	1:50 - 1:200
<b>IP</b>	1:50 - 1:200

## Contact

 | [www.abclonal.com](http://www.abclonal.com)

## Background

The protein encoded by this gene is a proinflammatory cytokine that augments natural killer cell activity in spleen cells, and stimulates interferon gamma production in T-helper type I cells. Alternatively spliced transcript variants encoding different isoforms have been found for this gene.

## Immunogen Information

<b>Gene ID</b>	<b>Swiss Prot</b>
3606	Q14116

### Immunogen

Recombinant protein of human IL18.

### Synonyms

IL18;IGIF;IL-18;IL-1g;IL1F4

## Product Information

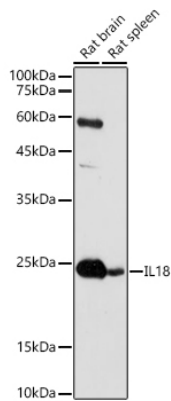
<b>Source</b>	<b>Isotype</b>	<b>Purification</b>
Rabbit	IgG	Affinity purification

### Storage

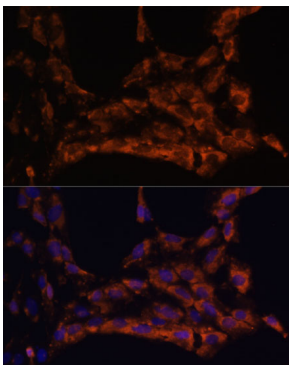
Store at -20°C. Avoid freeze / thaw cycles.

Buffer: PBS with 0.02% sodium azide, 50% glycerol, pH7.3.

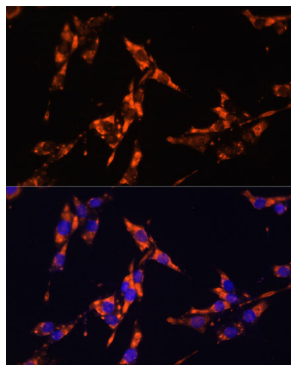
## Validation Data



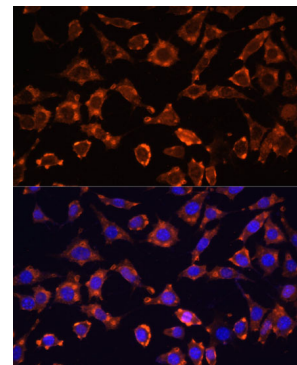
Western blot analysis of extracts of various cell lines, using IL18 antibody (A16737) at 1:1000 dilution. Secondary antibody: HRP Goat Anti-Rabbit IgG (H+L) (AS014) at 1:10000 dilution. Lysates/proteins: 25ug per lane. Blocking buffer: 3% nonfat dry milk in TBST. Detection: ECL Basic Kit (RM00020). Exposure time: 10s.



Immunofluorescence analysis of C6 cells using IL18 antibody (A16737) at dilution of 1:100. Blue: DAPI for nuclear staining.



Immunofluorescence analysis of HeLa cells using IL18 antibody (A16737) at dilution of 1:100. Blue: DAPI for nuclear staining.



Immunofluorescence analysis of L929 cells using IL18 antibody (A16737) at dilution of 1:100. Blue: DAPI for nuclear staining.