

A16735

Leader in Biomolecular Solutions for Life Science



# ABCA2 Rabbit pAb

Catalog No.: A16735 **2 Publications**

## Basic Information

### Observed MW

270kDa

### Calculated MW

270kDa

### Category

Polyclonal Antibody

### Applications

WB,IF/ICC,ELISA

### Cross-Reactivity

Human,Mouse,Rat

## Background

The membrane-associated protein encoded by this gene is a member of the superfamily of ATP-binding cassette (ABC) transporters. ABC proteins transport various molecules across extra- and intracellular membranes. ABC genes are divided into seven distinct subfamilies (ABC1, MDR/TAP, MRP, ALD, OABP, GCN20, White). This protein is a member of the ABC1 subfamily. Members of the ABC1 subfamily comprise the only major ABC subfamily found exclusively in multicellular eukaryotes. This protein is highly expressed in brain tissue and may play a role in macrophage lipid metabolism and neural development. Two transcript variants encoding different isoforms have been found for this gene.

## Recommended Dilutions

WB	1:500 - 1:1000
IF/ICC	1:50 - 1:200

## Immunogen Information

### Gene ID

20

### Swiss Prot

Q9BZC7

### Immunogen

Recombinant fusion protein containing a sequence corresponding to amino acids 140-350 of human ABCA2 (NP\_001597.2).

### Synonyms

ABC2; IDPOGSA; ABCA2

## Contact



[www.abclonal.com](http://www.abclonal.com)

## Product Information

### Source

Rabbit

### Isotype

IgG

### Purification

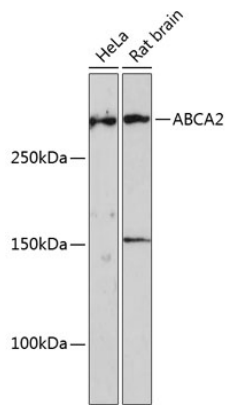
Affinity purification

### Storage

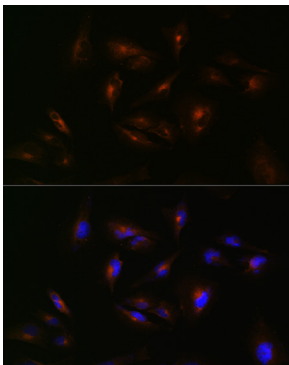
Store at -20°C. Avoid freeze / thaw cycles.

Buffer: PBS with 0.01% thimerosal,50% glycerol,pH7.3.

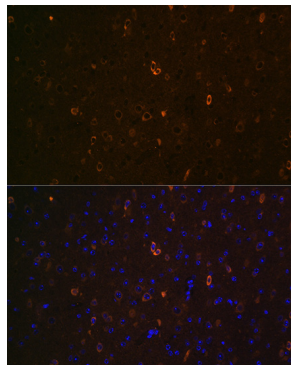
## Validation Data



Western blot analysis of various lysates using ABCA2 Rabbit pAb (A16735) at 1:1000 dilution.  
Secondary antibody: HRP Goat Anti-Rabbit IgG (H+L) (AS014) at 1:10000 dilution.  
Lysates/proteins: 25µg per lane.  
Blocking buffer: 3% nonfat dry milk in TBST.  
Detection: ECL Enhanced Kit (RM00021).  
Exposure time: 3min.



Immunofluorescence analysis of U-251 MG cells using ABCA2 Rabbit pAb (A16735) at dilution of 1:100 (40x lens). Secondary antibody: Cy3 Goat Anti-Rabbit IgG (H+L) (AS007) at 1:500 dilution. Blue: DAPI for nuclear staining.



Immunofluorescence analysis of paraffin-embedded mouse brain using ABCA2 Rabbit pAb (A16735) at dilution of 1:100 (40x lens). Secondary antibody: Cy3 Goat Anti-Rabbit IgG (H+L) (AS007) at 1:500 dilution. Blue: DAPI for nuclear staining.