

A16334

Leader in Biomolecular Solutions for Life Science



# ADRB1 Rabbit pAb

Catalog No.: A16334

## Basic Information

### Observed MW

51kDa

### Calculated MW

51kDa

### Category

Polyclonal Antibody

### Applications

WB,IF/ICC,ELISA

### Cross-Reactivity

Mouse,Rat

## Background

The adrenergic receptors (subtypes alpha 1, alpha 2, beta 1, and beta 2) are a prototypic family of guanine nucleotide binding regulatory protein-coupled receptors that mediate the physiological effects of the hormone epinephrine and the neurotransmitter norepinephrine. Beta-1 adrenoceptors are predominately located in the heart. Specific polymorphisms in this gene have been shown to affect the resting heart rate and can be involved in heart failure.

## Recommended Dilutions

WB	1:500 - 1:2000
IF/ICC	1:50 - 1:200

## Immunogen Information

### Gene ID

153

### Swiss Prot

P08588

### Immunogen

A synthetic peptide corresponding to a sequence within amino acids 150-250 of human ADRB1 (NP\_000675.1).

### Synonyms

RHR; B1AR; FNSS2; ADRB1R; BETA1AR; ADRB1

## Contact



[www.abclonal.com](http://www.abclonal.com)

## Product Information

### Source

Rabbit

### Isotype

IgG

### Purification

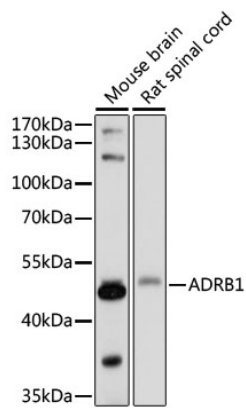
Affinity purification

### Storage

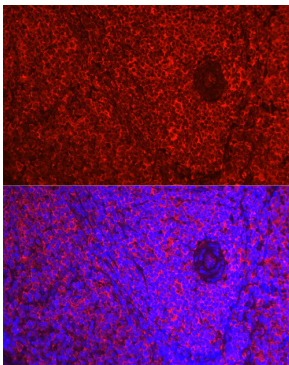
Store at -20°C. Avoid freeze / thaw cycles.

Buffer: PBS with 0.01% thimerosal,50% glycerol,pH7.3.

## Validation Data



Western blot analysis of various lysates using ADRB1 Rabbit pAb (A16334) at 1:1000 dilution. Secondary antibody: HRP Goat Anti-Rabbit IgG (H+L) (AS014) at 1:10000 dilution. Lysates/proteins: 25µg per lane. Blocking buffer: 3% nonfat dry milk in TBST. Detection: ECL Basic Kit (RM00020). Exposure time: 1s.



Immunofluorescence analysis of paraffin-embedded Rat spleen using ADRB1 Rabbit pAb (A16334) at dilution of 1:50 (40x lens). Secondary antibody: Cy3 Goat Anti-Rabbit IgG (H+L) (AS007) at 1:500 dilution. Blue: DAPI for nuclear staining.