

A16253

Leader in Biomolecular Solutions for Life Science



ACSL1 Rabbit pAb

Catalog No.: A16253 **5 Publications**

Basic Information

Observed MW

78kDa

Calculated MW

78kDa

Category

Polyclonal Antibody

Applications

WB,IF/ICC,IP,ELISA

Cross-Reactivity

Human,Mouse,Rat

Background

The protein encoded by this gene is an isozyme of the long-chain fatty-acid-coenzyme A ligase family. Although differing in substrate specificity, subcellular localization, and tissue distribution, all isozymes of this family convert free long-chain fatty acids into fatty acyl-CoA esters, and thereby play a key role in lipid biosynthesis and fatty acid degradation. Several transcript variants encoding different isoforms have been found for this gene.

Recommended Dilutions

WB 1:500 - 1:1000

IF/ICC 1:50 - 1:200

IP 0.5µg-4µg antibody for
200µg-400µg extracts of
whole cells

Immunogen Information

Gene ID

2180

Swiss Prot

P33121

Immunogen

Recombinant fusion protein containing a sequence corresponding to amino acids 46-145 of human ACSL1 (NP_001986.2).

Synonyms

ACS1; LACS; FAFL1; FAFL2; LACS1; LACS2; ACSL1

Contact



www.abclonal.com

Product Information

Source

Rabbit

Isotype

IgG

Purification

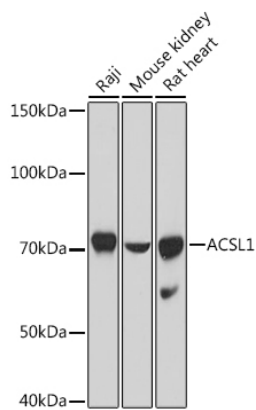
Affinity purification

Storage

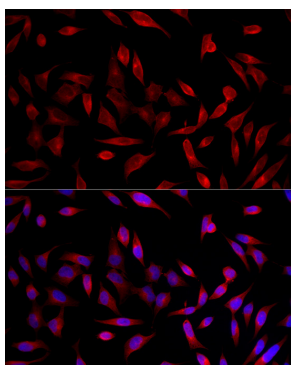
Store at -20°C. Avoid freeze / thaw cycles.

Buffer: PBS with 0.01% thimerosal,50% glycerol,pH7.3.

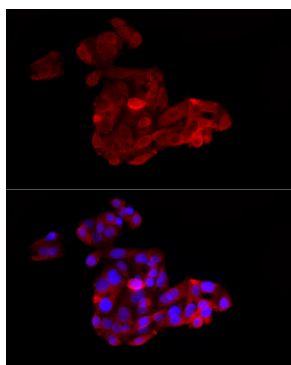
Validation Data



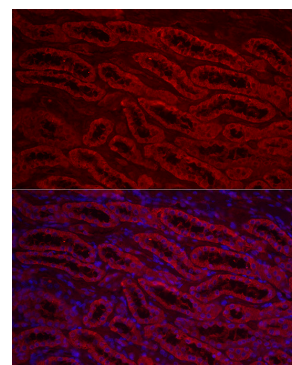
Western blot analysis of various lysates using ACSL1 Rabbit pAb (A16253) at 1:1000 dilution. Secondary antibody: HRP Goat Anti-Rabbit IgG (H+L) (AS014) at 1:10000 dilution. Lysates/proteins: 25 μ g per lane. Blocking buffer: 3% nonfat dry milk in TBST. Detection: ECL Basic Kit (RM00020). Exposure time: 10s.



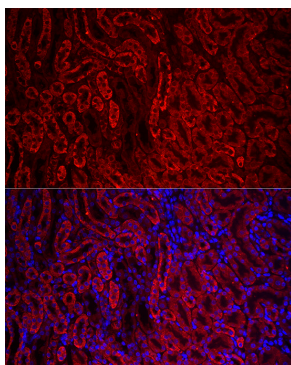
Immunofluorescence analysis of HeLa cells using ACSL1 Rabbit pAb (A16253) at dilution of 1:200 (40x lens). Secondary antibody: Cy3 Goat Anti-Rabbit IgG (H+L) (AS007) at 1:500 dilution. Blue: DAPI for nuclear staining.



Immunofluorescence analysis of HepG2 cells using ACSL1 Rabbit pAb (A16253) at dilution of 1:200 (40x lens). Secondary antibody: Cy3 Goat Anti-Rabbit IgG (H+L) (AS007) at 1:500 dilution. Blue: DAPI for nuclear staining.

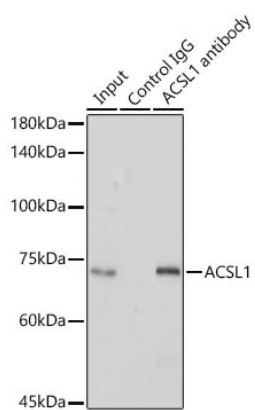


Immunofluorescence analysis of paraffin-embedded rat kidney using ACSL1 Rabbit pAb (A16253) at dilution of 1:200 (40x lens). Secondary antibody: Cy3 Goat Anti-Rabbit IgG (H+L) (AS007) at 1:500 dilution. Blue: DAPI for nuclear staining.



Immunofluorescence analysis of paraffin-embedded mouse kidney using ACSL1 Rabbit pAb (A16253) at dilution of 1:200 (40x lens). Secondary antibody: Cy3 Goat Anti-Rabbit IgG (H+L) (AS007) at 1:500 dilution. Blue: DAPI for nuclear staining.

Validation Data



Immunoprecipitation analysis of 300 μ g extracts of Raji cells using 3 μ g ACSL1 Rabbit pAb (A16253). Western blot was performed from the immunoprecipitate using ACSL1 Rabbit pAb (A16253) at a dilution of 1:1000.