

SLC28A2 Rabbit pAb

Catalog No.: A16086 **1 Publications**

Basic Information

Observed MW

72kDa

Calculated MW

72kDa

Category

Primary antibody

Applications

ELISA, WB

Cross-Reactivity

Human, Mouse, Rat

Background

Enables neurotransmitter transmembrane transporter activity and nucleoside transmembrane transporter activity. Involved in several processes, including nucleoside transport; purine nucleobase transmembrane transport; and pyrimidine-containing compound transmembrane transport. Predicted to be located in membrane. Predicted to be part of brush border membrane; coated vesicle; and vesicle membrane. Predicted to be integral component of plasma membrane.

Recommended Dilutions

WB 1:500 - 1:2000

Immunogen Information

Gene ID

9153

Swiss Prot

O43868

Immunogen

A synthetic peptide corresponding to a sequence within amino acids 350-450 of human SLC28A2 (NP_004203.2).

Synonyms

CNT2; HCNT2; SPNT1; HsT17153; SLC28A2

Contact

 | www.abclonal.com

Product Information

Source

Rabbit

Isotype

IgG

Purification

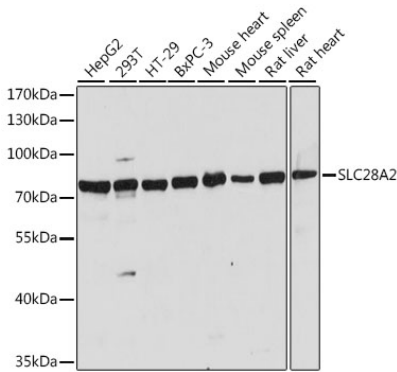
Affinity purification

Storage

Store at -20°C. Avoid freeze / thaw cycles.

Buffer: PBS with 0.01% thimerosal, 50% glycerol, pH7.3.

Validation Data



Western blot analysis of various lysates using SLC28A2 Rabbit pAb (A16086) at 1:1000 dilution.
Secondary antibody: HRP Goat Anti-Rabbit IgG (H+L) (AS014) at 1:10000 dilution.
Lysates/proteins: 25µg per lane.
Blocking buffer: 3% nonfat dry milk in TBST.
Detection: ECL Basic Kit (RM00020).
Exposure time: 5s.