

A16079

Leader in Biomolecular Solutions for Life Science



USO1 Rabbit pAb

Catalog No.: A16079

Basic Information

Observed MW

108kDa

Calculated MW

108kDa

Category

Mouse Monoclonal Antibody

Applications

WB,IF/ICC,ELISA

Cross-Reactivity

Human,Rat

Background

The protein encoded by this gene is a peripheral membrane protein which recycles between the cytosol and the Golgi apparatus during interphase. It is regulated by phosphorylation: dephosphorylated protein associates with the Golgi membrane and dissociates from the membrane upon phosphorylation. Ras-associated protein 1 recruits this protein to coat protein complex II (COPII) vesicles during budding from the endoplasmic reticulum, where it interacts with a set of COPII vesicle-associated SNAREs to form a cis-SNARE complex that promotes targeting to the Golgi apparatus. Alternative splicing results in multiple transcript variants.

Recommended Dilutions

WB	1:500 - 1:2000
IF/ICC	1:50 - 1:100

Immunogen Information

Gene ID

8615

Swiss Prot

O60763

Immunogen

Recombinant fusion protein containing a sequence corresponding to amino acids 663-962 of human USO1 (NP_003706.2).

Synonyms

TAP; VDP; P115; USO1

Contact



www.abclonal.com

Product Information

Source

Rabbit

Isotype

IgG

Purification

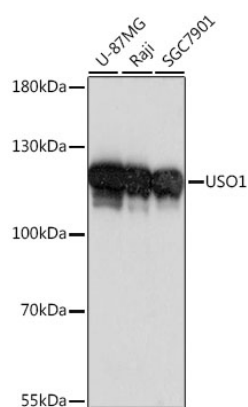
Affinity purification

Storage

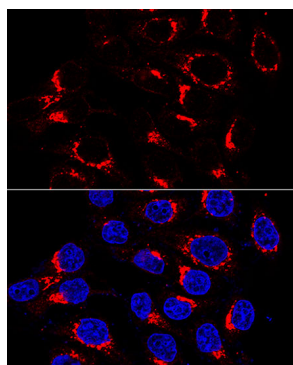
Store at -20°C. Avoid freeze / thaw cycles.

Buffer: PBS with 0.01% thimerosal,50% glycerol,pH7.3.

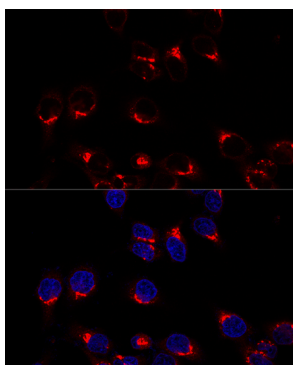
Validation Data



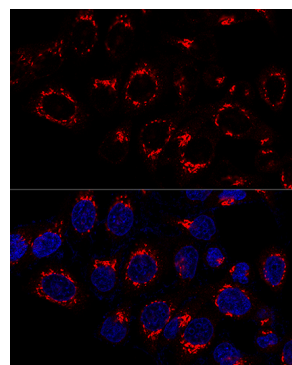
Western blot analysis of various lysates using USO1 Rabbit pAb (A16079) at 1:1000 dilution. Secondary antibody: HRP Goat Anti-Rabbit IgG (H+L) (AS014) at 1:10000 dilution. Lysates/proteins: 25μg per lane. Blocking buffer: 3% nonfat dry milk in TBST. Detection: ECL Basic Kit (RM00020). Exposure time: 1s.



Immunofluorescence analysis of HeLa cells using USO1 Rabbit pAb (A16079) at dilution of 1:200 (60x lens). Blue: DAPI for nuclear staining.



Confocal immunofluorescence analysis of HeLa cells using USO1 Rabbit pAb (A16079) at dilution of 1:200. Blue: DAPI for nuclear staining.



Confocal immunofluorescence analysis of HeLa cells using USO1 Rabbit pAb (A16079) at dilution of 1:50. Blue: DAPI for nuclear staining.