

A16071

Leader in Biomolecular Solutions for Life Science



## SSTR3 Rabbit pAb

Catalog No.: A16071

### Basic Information

---

**Observed MW**

46kDa

**Calculated MW**

46kDa

**Category**

Polyclonal Antibody

**Applications**

WB,ELISA

**Cross-Reactivity**

Human,Mouse,Rat

### Background

---

This gene encodes a member of the somatostatin receptor protein family. Somatostatins are peptide hormones that regulate diverse cellular functions such as neurotransmission, cell proliferation, and endocrine signaling as well as inhibiting the release of many hormones and other secretory proteins. Somatostatin has two active forms of 14 and 28 amino acids. The biological effects of somatostatins are mediated by a family of G-protein coupled somatostatin receptors that are expressed in a tissue-specific manner. Somatostatin receptors form homodimers and heterodimers with other members of the superfamily as well as with other G-protein coupled receptors and receptor tyrosine kinases. This protein is functionally coupled to adenylyl cyclase. Alternate splicing results in multiple transcript variants.

### Recommended Dilutions

---

WB 1:500 - 1:2000

### Immunogen Information

---

**Gene ID**

6753

**Swiss Prot**

P32745

**Immunogen**

A synthetic peptide corresponding to a sequence within amino acids 250-350 of human SSTR3 (NP\_001042.1).

**Synonyms**

SS3R; SST3; SS3-R; SS-3-R; SSR-28; SSTR3

### Contact

---



[www.abclonal.com](http://www.abclonal.com)

### Product Information

---

**Source**

Rabbit

**Isotype**

IgG

**Purification**

Affinity purification

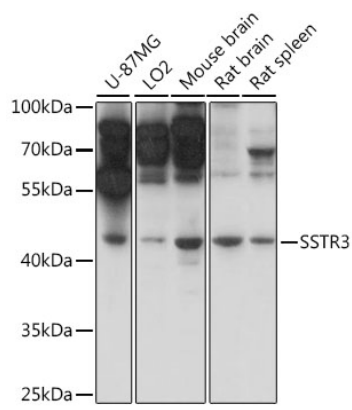
**Storage**

Store at -20°C. Avoid freeze / thaw cycles.

Buffer: PBS with 0.01% thimerosal,50% glycerol,pH7.3.

## Validation Data

---



Western blot analysis of various lysates using SSTR3 Rabbit pAb (A16071) at 1:1000 dilution.  
Secondary antibody: HRP Goat Anti-Rabbit IgG (H+L) (AS014) at 1:10000 dilution.  
Lysates/proteins: 25 $\mu$ g per lane.  
Blocking buffer: 3% nonfat dry milk in TBST.  
Detection: ECL Basic Kit (RM00020).  
Exposure time: 1s.