

A16070

Leader in Biomolecular Solutions for Life Science



SNRPD3 Rabbit pAb

Catalog No.: A16070

Basic Information

Observed MW

14kDa

Calculated MW

14kDa

Category

Mouse Monoclonal Antibody

Applications

WB,ELISA

Cross-Reactivity

Human,Mouse,Rat

Background

This gene encodes a core component of the spliceosome, which is a nuclear ribonucleoprotein complex that functions in pre-mRNA splicing. Alternative splicing results in multiple transcript variants.

Recommended Dilutions

WB 1:500 - 1:2000

Immunogen Information

Gene ID

6634

Swiss Prot

P62318

Immunogen

Recombinant fusion protein containing a sequence corresponding to amino acids 8-121 of human SNRPD3 (NP_001265585).

Synonyms

SMD3; Sm-D3; SNRPD3

Contact



www.abclonal.com

Product Information

Source

Rabbit

Isotype

IgG

Purification

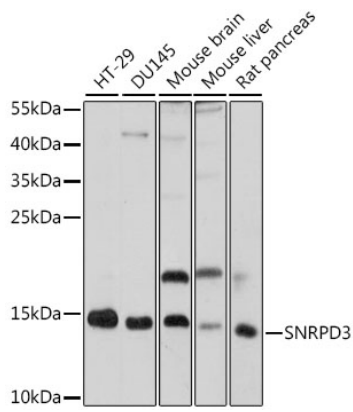
Affinity purification

Storage

Store at -20°C. Avoid freeze / thaw cycles.

Buffer: PBS with 0.01% thimerosal,50% glycerol,pH7.3.

Validation Data



Western blot analysis of various lysates using SNRPD3 Rabbit pAb (A16070) at 1:1000 dilution. Secondary antibody: HRP Goat Anti-Rabbit IgG (H+L) (AS014) at 1:10000 dilution. Lysates/proteins: 25µg per lane. Blocking buffer: 3% nonfat dry milk in TBST. Detection: ECL Basic Kit (RM00020). Exposure time: 30s.