

A16057

Leader in Biomolecular Solutions for Life Science



MAP3K1 Rabbit pAb

Catalog No.: A16057

2 Publications

Basic Information

Observed MW

164kDa

Calculated MW

164kDa

Category

Polyclonal Antibody

Applications

WB, IHC-P, IF/ICC, ELISA

Cross-Reactivity

Human, Mouse, Rat

Background

The protein encoded by this gene is a serine/threonine kinase and is part of some signal transduction cascades, including the ERK and JNK kinase pathways as well as the NF-kappa-B pathway. The encoded protein is activated by autophosphorylation and requires magnesium as a cofactor in phosphorylating other proteins. This protein has E3 ligase activity conferred by a plant homeodomain (PHD) in its N-terminus and phospho-kinase activity conferred by a kinase domain in its C-terminus.

Recommended Dilutions

WB	1:500 - 1:2000
IHC-P	1:50 - 1:100
IF/ICC	1:50 - 1:100

Immunogen Information

Gene ID

4214

Swiss Prot

Q13233

Immunogen

A synthetic peptide corresponding to a sequence within amino acids 1400-1512 of human MAP3K1 (NP_005912.1).

Synonyms

MEKK; MEKK1; SRXY6; MEKK 1; MAPKKK1; MAP3K1

Contact



www.abclonal.com

Product Information

Source

Rabbit

Isotype

IgG

Purification

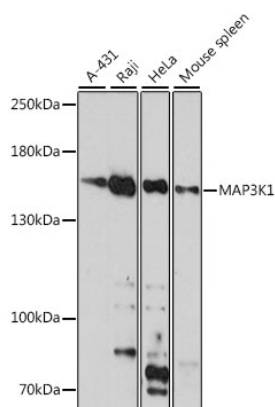
Affinity purification

Storage

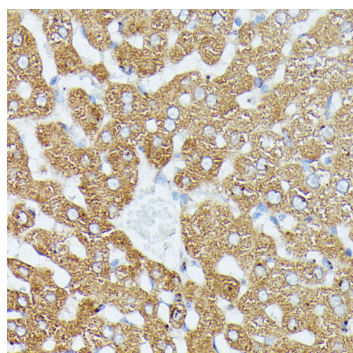
Store at -20°C. Avoid freeze / thaw cycles.

Buffer: PBS with 0.01% thimerosal, 50% glycerol, pH7.3.

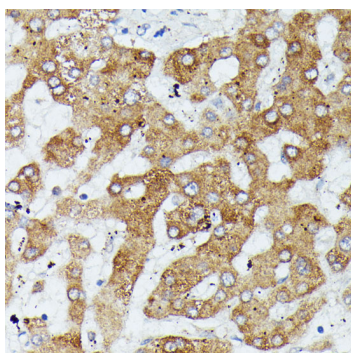
Validation Data



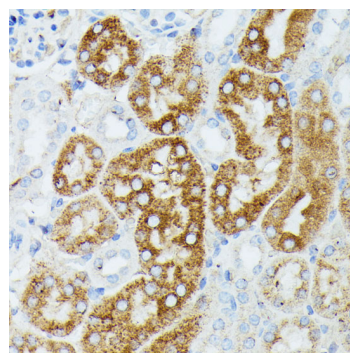
Western blot analysis of various lysates using MAP3K1 Rabbit pAb (A16057) at 1:1000 dilution.
 Secondary antibody: HRP Goat Anti-Rabbit IgG (H+L) (A5014) at 1:10000 dilution.
 Lysates/proteins: 25µg per lane.
 Blocking buffer: 3% nonfat dry milk in TBST.
 Detection: ECL Basic Kit (RM00020).
 Exposure time: 30s.



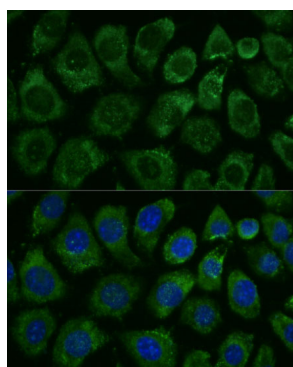
Immunohistochemistry analysis of MAP3K1 in paraffin-embedded rat liver using MAP3K1 Rabbit pAb (A16057) at dilution of 1:100 (40x lens). Perform microwave antigen retrieval with 10 mM PBS buffer pH 7.2 before commencing with IHC staining protocol.



Immunohistochemistry analysis of MAP3K1 in paraffin-embedded human liver using MAP3K1 Rabbit pAb (A16057) at dilution of 1:100 (40x lens). Perform microwave antigen retrieval with 10 mM PBS buffer pH 7.2 before commencing with IHC staining protocol.



Immunohistochemistry analysis of MAP3K1 in paraffin-embedded mouse kidney using MAP3K1 Rabbit pAb (A16057) at dilution of 1:100 (40x lens). Perform microwave antigen retrieval with 10 mM PBS buffer pH 7.2 before commencing with IHC staining protocol.



Immunofluorescence analysis of L929 cells using MAP3K1 Rabbit pAb (A16057) at dilution of 1:100 (40x lens). Secondary antibody: Cy3 Goat Anti-Rabbit IgG (H+L) (A5007) at 1:500 dilution. Blue: DAPI for nuclear staining.