

A16054

Leader in Biomolecular Solutions for Life Science



ITGA1 Rabbit pAb

Catalog No.: A16054

Basic Information

Observed MW

200kDa

Calculated MW

131kDa

Category

Mouse Monoclonal Antibody

Applications

WB,ELISA

Cross-Reactivity

Mouse,Rat

Background

This gene encodes the alpha 1 subunit of integrin receptors. This protein heterodimerizes with the beta 1 subunit to form a cell-surface receptor for collagen and laminin. The heterodimeric receptor is involved in cell-cell adhesion and may play a role in inflammation and fibrosis. The alpha 1 subunit contains an inserted (I) von Willebrand factor type I domain which is thought to be involved in collagen binding.

Recommended Dilutions

WB 1:500 - 1:2000

Immunogen Information

Gene ID

3672

Swiss Prot

P56199

Immunogen

A synthetic peptide corresponding to a sequence within amino acids 700-800 of human ITGA1 (NP_852478.1).

Synonyms

VLA1; CD49a; ITGA1

Contact



www.abclonal.com

Product Information

Source

Rabbit

Isotype

IgG

Purification

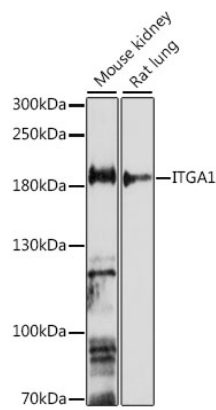
Affinity purification

Storage

Store at -20°C. Avoid freeze / thaw cycles.

Buffer: PBS with 0.01% thimerosal,50% glycerol,pH7.3.

Validation Data



Western blot analysis of various lysates using ITGA1 Rabbit pAb (A16054) at 1:1000 dilution.
Secondary antibody: HRP Goat Anti-Rabbit IgG (H+L) (AS014) at 1:10000 dilution.
Lysates/proteins: 25 μ g per lane.
Blocking buffer: 3% nonfat dry milk in TBST.
Detection: ECL Enhanced Kit (RM00021).
Exposure time: 5min.