

A16053

Leader in Biomolecular Solutions for Life Science



IGHMBP2 Rabbit pAb

Catalog No.: A16053

Basic Information

Observed MW

109kDa

Calculated MW

109kDa

Category

Mouse Monoclonal Antibody

Applications

WB, IHC-P, ELISA

Cross-Reactivity

Human, Mouse, Rat

Background

This gene encodes a helicase superfamily member that binds a specific DNA sequence from the immunoglobulin mu chain switch region. Mutations in this gene lead to spinal muscle atrophy with respiratory distress type 1.

Recommended Dilutions

WB 1:500 - 1:2000

IHC-P 1:50 - 1:100

Immunogen Information

Gene ID

3508

Swiss Prot

P38935

Immunogen

Recombinant fusion protein containing a sequence corresponding to amino acids 540-720 of human IGHMBP2 (NP_002171.2).

Synonyms

HCSA; HMN6; CATF1; CMT2S; SMARD1; SMUBP2; ZFAND7; IGHMBP2

Contact



www.abclonal.com

Product Information

Source

Rabbit

Isotype

IgG

Purification

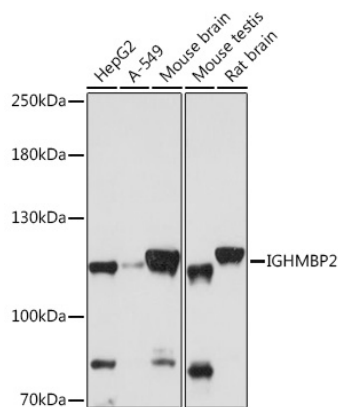
Affinity purification

Storage

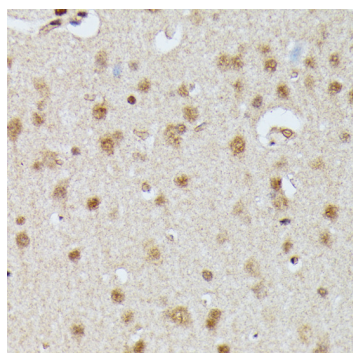
Store at -20°C. Avoid freeze / thaw cycles.

Buffer: PBS with 0.01% thimerosal, 50% glycerol, pH7.3.

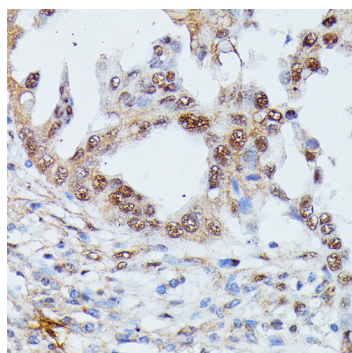
Validation Data



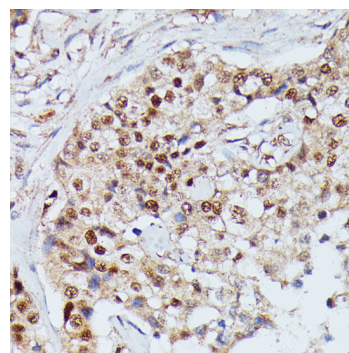
Western blot analysis of various lysates using IGHMBP2 Rabbit pAb (A16053) at 1:1000 dilution. Secondary antibody: HRP Goat Anti-Rabbit IgG (H+L) (AS014) at 1:10000 dilution. Lysates/proteins: 25µg per lane. Blocking buffer: 3% nonfat dry milk in TBST. Detection: ECL Basic Kit (RM00020). Exposure time: 60s.



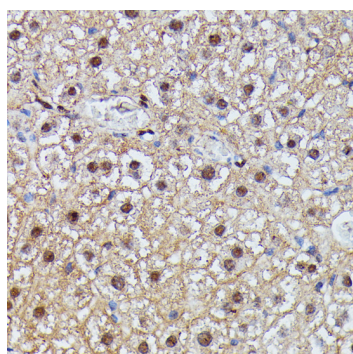
Immunohistochemistry analysis of IGHMBP2 in paraffin-embedded rat brain using IGHMBP2 Rabbit pAb (A16053) at dilution of 1:100 (40x lens). Perform microwave antigen retrieval with 10 mM PBS buffer pH 7.2 before commencing with IHC staining protocol.



Immunohistochemistry analysis of IGHMBP2 in paraffin-embedded human lung cancer using IGHMBP2 Rabbit pAb (A16053) at dilution of 1:100 (40x lens). Perform microwave antigen retrieval with 10 mM PBS buffer pH 7.2 before commencing with IHC staining protocol.



Immunohistochemistry analysis of IGHMBP2 in paraffin-embedded human mammary cancer using IGHMBP2 Rabbit pAb (A16053) at dilution of 1:100 (40x lens). Perform microwave antigen retrieval with 10 mM PBS buffer pH 7.2 before commencing with IHC staining protocol.



Immunohistochemistry analysis of IGHMBP2 in paraffin-embedded mouse liver using IGHMBP2 Rabbit pAb (A16053) at dilution of 1:100 (40x lens). Perform microwave antigen retrieval with 10 mM PBS buffer pH 7.2 before commencing with IHC staining protocol.