

A16049

Leader in Biomolecular Solutions for Life Science



# GPR32 Rabbit pAb

Catalog No.: A16049

## Basic Information

---

### Observed MW

45kDa

### Calculated MW

40kDa

### Category

Mouse Monoclonal Antibody

### Applications

WB,ELISA

### Cross-Reactivity

Human,Mouse,Rat

## Background

---

This gene is intronless and encodes a member of the G-protein coupled receptor 1 family. The encoded protein binds to resolvin D1 and lipoxin A4 and has been linked to pulmonary inflammation. A related pseudogene has been identified on chromosome 19.

## Recommended Dilutions

---

WB 1:500 - 1:2000

## Immunogen Information

---

### Gene ID

2854

### Swiss Prot

O75388

### Immunogen

A synthetic peptide corresponding to a sequence within amino acids 1-100 of human GPR32 (NP\_001497.1).

### Synonyms

DRV1; RVDR1; GPR32

## Contact

---



[www.abclonal.com](http://www.abclonal.com)

## Product Information

---

### Source

Rabbit

### Isotype

IgG

### Purification

Affinity purification

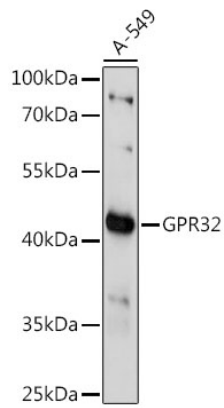
### Storage

Store at -20°C. Avoid freeze / thaw cycles.

Buffer: PBS with 0.01% thimerosal,50% glycerol,pH7.3.

## Validation Data

---



Western blot analysis of lysates from A-549 cells, using GPR32 Rabbit pAb (A16049) at 1:1000 dilution.  
Secondary antibody: HRP Goat Anti-Rabbit IgG (H+L) (AS014) at 1:10000 dilution.  
Lysates/proteins: 25µg per lane.  
Blocking buffer: 3% nonfat dry milk in TBST.  
Detection: ECL Basic Kit (RM00020).  
Exposure time: 90s.