

A16041

Leader in Biomolecular Solutions for Life Science



DCT Rabbit pAb

Catalog No.: A16041 **2 Publications**

Basic Information

Observed MW

59kDa

Calculated MW

59kDa

Category

Mouse Monoclonal Antibody

Applications

WB,ELISA

Cross-Reactivity

Human,Mouse

Background

Predicted to enable dopachrome isomerase activity. Involved in response to blue light. Located in intracellular membrane-bounded organelle and plasma membrane. Implicated in oculocutaneous albinism.

Recommended Dilutions

WB 1:500 - 1:2000

Immunogen Information

Gene ID

1638

Swiss Prot

P40126

Immunogen

Recombinant fusion protein containing a sequence corresponding to amino acids 50-350 of human DCT (NP_001913.2).

Synonyms

OCA8; TRP-2; TYRP2; DCT

Contact



www.abclonal.com

Product Information

Source

Rabbit

Isotype

IgG

Purification

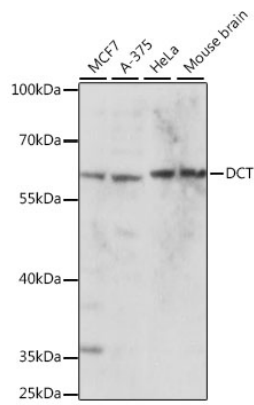
Affinity purification

Storage

Store at -20°C. Avoid freeze / thaw cycles.

Buffer: PBS with 0.01% thimerosal,50% glycerol,pH7.3.

Validation Data



Western blot analysis of various lysates using DCT Rabbit pAb (A16041) at 1:1000 dilution.
Secondary antibody: HRP Goat Anti-Rabbit IgG (H+L) (AS014) at 1:10000 dilution.
Lysates/proteins: 25µg per lane.
Blocking buffer: 3% nonfat dry milk in TBST.
Detection: ECL Basic Kit (RM00020).
Exposure time: 10s.