

MASP2 Rabbit pAb

Catalog No.: A16030

Basic Information

Observed MW

76kDa

Calculated MW

76kDa

Category

Primary antibody

Applications

ELISA, WB

Cross-Reactivity

Human, Mouse, Rat

Background

This gene encodes a member of the peptidase S1 family of serine proteases. The encoded preproprotein is proteolytically processed to generate A and B chains that heterodimerize to form the mature protease. This protease cleaves complement components C2 and C4 in order to generate C3 convertase in the lectin pathway of the complement system. The encoded protease also plays a role in the coagulation cascade through cleavage of prothrombin to form thrombin. Myocardial infarction and acute stroke patients exhibit reduced serum concentrations of the encoded protein. Alternative splicing results in multiple transcript variants, at least one of which encodes an isoform that is proteolytically processed.

Recommended Dilutions

WB 1:500 - 1:2000

Immunogen Information

Gene ID

10747

Swiss Prot

O00187

Immunogen

Recombinant fusion protein containing a sequence corresponding to amino acids 445-686 of human MASP2 (NP_006601.2).

Synonyms

sMAP; MAP-2; MAP19; MASP-2; MASP1P1; MASP2

Contact

 | www.abclonal.com

Product Information

Source

Rabbit

Isotype

IgG

Purification

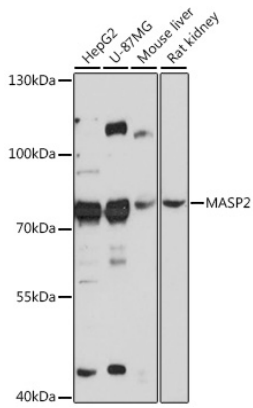
Affinity purification

Storage

Store at -20°C. Avoid freeze / thaw cycles.

Buffer: PBS with 0.01% thimerosal, 50% glycerol, pH7.3.

Validation Data



Western blot analysis of various lysates using MASP2 Rabbit pAb (A16030) at 1:3000 dilution.
Secondary antibody: HRP Goat Anti-Rabbit IgG (H+L) (AS014) at 1:10000 dilution.
Lysates/proteins: 25µg per lane.
Blocking buffer: 3% nonfat dry milk in TBST.
Detection: ECL Basic Kit (RM00020).
Exposure time: 90s.