

# PGAM5 Rabbit pAb

Catalog No.: A16022 **1 Publications**

## Basic Information

---

### Observed MW

28kDa/30kDa

### Calculated MW

32kDa

### Category

Primary antibody

### Applications

ELISA, WB, IHC-P, IF/ICC

### Cross-Reactivity

Human, Mouse, Rat

## Background

---

Enables GTPase activator activity and protein serine/threonine phosphatase activity. Involved in necroptotic process. Located in mitochondrion.

## Recommended Dilutions

---

<b>WB</b>	1:100 - 1:500
<b>IHC-P</b>	1:50 - 1:200
<b>IF/ICC</b>	1:50 - 1:200

## Immunogen Information

---

### Gene ID

192111

### Swiss Prot

Q96H51

### Immunogen

Recombinant fusion protein containing a sequence corresponding to amino acids 50-146 of human PGAM5 (NP\_001164014.1).

### Synonyms

BXLBV68; PGAM5

## Contact

---

 | [www.abclonal.com](http://www.abclonal.com)

## Product Information

---

### Source

Rabbit

### Isotype

IgG

### Purification

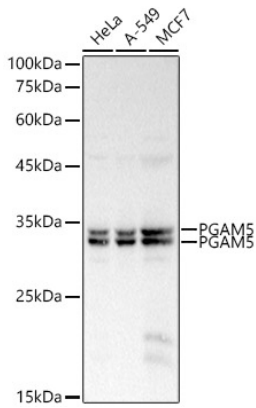
Affinity purification

### Storage

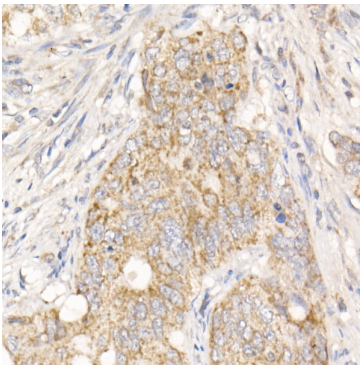
Store at -20°C. Avoid freeze / thaw cycles.

Buffer: PBS with 0.05% proclin300, 50% glycerol, pH7.3.

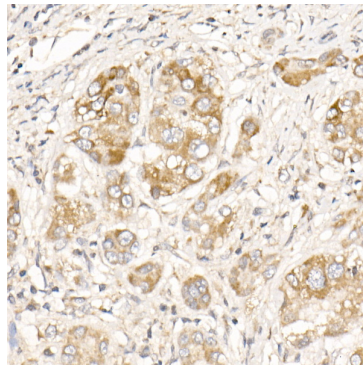
## Validation Data



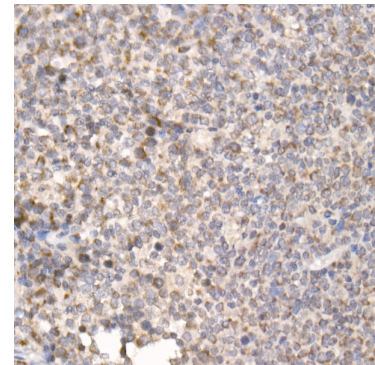
Western blot analysis of various lysates, using PGAM5 antibody (A16022) at 1:500 dilution.  
Secondary antibody: HRP Goat Anti-Rabbit IgG (H+L) (AS014) at 1:10000 dilution.  
Lysates/proteins: 25µg per lane.  
Blocking buffer: 3% nonfat dry milk in TBST.  
Detection: ECL Basic Kit (RM00020).  
Exposure time: 1s.



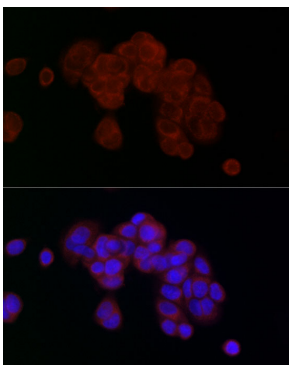
Immunohistochemistry analysis of paraffin-embedded human colon carcinoma using PGAM5 Rabbit pAb (A16022) at dilution of 1:20 (40x lens). Perform high pressure antigen retrieval with 10 mM citrate buffer pH 6.0 before commencing with IHC staining protocol.



Immunohistochemistry analysis of paraffin-embedded human liver cancer using PGAM5 Rabbit pAb (A16022) at dilution of 1:20 (40x lens). Perform high pressure antigen retrieval with 10 mM citrate buffer pH 6.0 before commencing with IHC staining protocol.



Immunohistochemistry analysis of paraffin-embedded human tonsil using PGAM5 Rabbit pAb (A16022) at dilution of 1:20 (40x lens). Perform high pressure antigen retrieval with 10 mM citrate buffer pH 6.0 before commencing with IHC staining protocol.



Immunofluorescence analysis of MCF7 cells using PGAM5 Rabbit pAb (A16022) at dilution of 1:20 (40x lens). Blue: DAPI for nuclear staining.