

A16018

Leader in Biomolecular Solutions for Life Science



PLA2G16 Rabbit pAb

Catalog No.: A16018 **1 Publications**

Basic Information

Observed MW

18kDa

Calculated MW

18kDa

Category

Mouse Monoclonal Antibody

Applications

WB,ELISA

Cross-Reactivity

Human

Background

Enables N-acyltransferase activity; phospholipase A1 activity; and phospholipase A2 activity. Involved in N-acylphosphatidylethanolamine metabolic process. Predicted to be located in several cellular components, including lysosome; nuclear envelope; and peroxisome. Predicted to be active in cytoplasm. Biomarker of seminoma.

Recommended Dilutions

WB 1:500 - 1:2000

Immunogen Information

Gene ID

11145

Swiss Prot

P53816

Immunogen

Recombinant fusion protein containing a sequence corresponding to amino acids 68-162 of human PLA2G16 (NP_009000.2).

Synonyms

AdPLA; HRSL3; HRASLS3; HREV107; PLA2G16; PLAAT-3; H-REV107; HREV107-1; HREV107-3; H-REV107-1

Contact



www.abclonal.com

Product Information

Source

Rabbit

Isotype

IgG

Purification

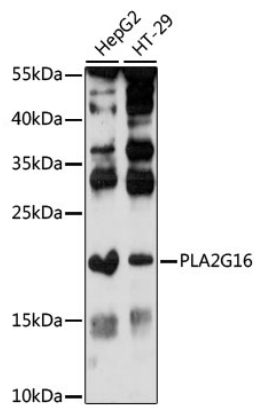
Affinity purification

Storage

Store at -20°C. Avoid freeze / thaw cycles.

Buffer: PBS with 0.01% thimerosal, 50% glycerol, pH7.3.

Validation Data



Western blot analysis of various lysates using PLA2G16 Rabbit pAb (A16018) at 1:1000 dilution.
Secondary antibody: HRP Goat Anti-Rabbit IgG (H+L) (AS014) at 1:10000 dilution.
Lysates/proteins: 25 μ g per lane.
Blocking buffer: 3% nonfat dry milk in TBST.
Detection: ECL Enhanced Kit (RM00021).
Exposure time: 90s.