

A16012

Leader in Biomolecular Solutions for Life Science



DiMethyl-DNMT3A-K44 Rabbit pAb

Catalog No.: A16012

Basic Information

Observed MW

Calculated MW
102kDa

Category
Polyclonal Antibody

Applications
IF/ICC,ELISA

Cross-Reactivity
Human,Mouse,Rat

Background

This is one of two related genes encoding de novo DNA methyltransferases, which are responsible for the establishment of DNA methylation patterns in embryos. Loss of function of this gene causes developmental defects in multiple different organ systems. There is a pseudogene for this gene located on chromosome 3. Alternatively spliced transcript variants encoding multiple isoforms have been observed.

Recommended Dilutions

IF/ICC 1:50 - 1:200

Immunogen Information

Gene ID 13435	Swiss Prot O88508
-------------------------	-----------------------------

Immunogen
A synthetic dimethylated peptide around K44 of mouse DNMT3A (NP_031898.1).

Synonyms
MmullIA; DiMethyl-DNMT3A-K44

Contact

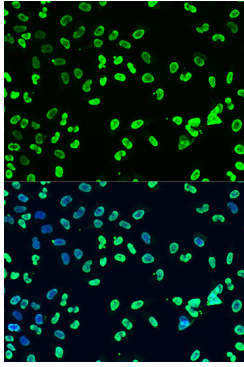
 | www.abclonal.com

Product Information

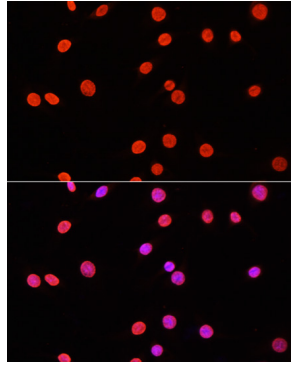
Source Rabbit	Isotype IgG	Purification Affinity purification
-------------------------	-----------------------	--

Storage
Store at -20°C. Avoid freeze / thaw cycles.
Buffer: PBS with 0.02% sodium azide,50% glycerol,pH7.3.

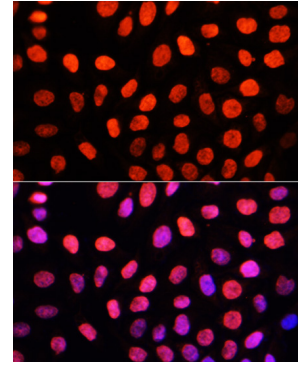
Validation Data



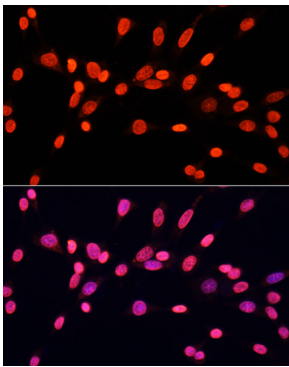
Immunofluorescence analysis of U2OS cells using DiMethyl-DNMT3A-K44 antibody (A16012) at dilution of 1:100. Blue: DAPI for nuclear staining.



Immunofluorescence analysis of C6 cells using DiMethyl-DNMT3A-K44 antibody (A16012) at dilution of 1:100. Blue: DAPI for nuclear staining.



Immunofluorescence analysis of HeLa cells using DiMethyl-DNMT3A-K44 antibody (A16012) at dilution of 1:100. Blue: DAPI for nuclear staining.



Immunofluorescence analysis of NIH/3T3 cells using DiMethyl-DNMT3A-K44 antibody (A16012) at dilution of 1:100. Blue: DAPI for nuclear staining.