

A16011

Leader in Biomolecular Solutions for Life Science



## HNRNPCL1 Rabbit pAb

Catalog No.: A16011

### Basic Information

**Observed MW**

43kDa

**Calculated MW**

32kDa

**Category**

Mouse Monoclonal Antibody

**Applications**

WB, ELISA

**Cross-Reactivity**

Human

### Background

Enables identical protein binding activity. Predicted to be active in nucleus.

### Recommended Dilutions

WB 1:500 - 1:1000

### Immunogen Information

**Gene ID**

343069

**Swiss Prot**

O60812

**Immunogen**

A synthetic peptide corresponding to a sequence within amino acids 200 to the C-terminus of human HNRNPCL1 (NP\_001013653.1).

**Synonyms**

HNRPCL1; HNRNPCL1

### Contact



[www.abclonal.com](http://www.abclonal.com)

### Product Information

**Source**

Rabbit

**Isotype**

IgG

**Purification**

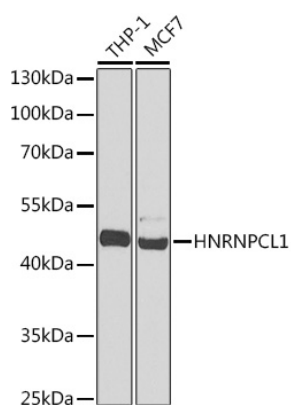
Affinity purification

**Storage**

Store at -20°C. Avoid freeze / thaw cycles.

Buffer: PBS with 0.02% sodium azide, 50% glycerol, pH 7.3.

## Validation Data



Western blot analysis of extracts of various cell lines, using HNRNPCL1 antibody (A16011) at 1:1000 dilution.

Secondary antibody: HRP Goat Anti-Rabbit IgG (H+L) (AS014) at 1:10000 dilution.

Lysates/proteins: 25µg per lane.

Blocking buffer: 3% nonfat dry milk in TBST.

Detection: ECL Basic Kit (RM00020).

Exposure time: 90s.